

CD45 Rabbit mAb(AR1250)

Key Features

Host Species:	Rabbit
Reactivity:	Human
Applications:	WB,IHC,IF,ELISA
Isotype:	IgG,Kappa
MW:	147kD (Calculated) 200-240kD (Observed)

Recommended Dilution Ratios

IHC:	1:1000-10000
WB:	1:1000-5000
IF:	1:200-1000
ELISA:	1:5000-20000

Storage

-15°C to -25°C/1 year (Do not lower than -25°C)

Basic Information

Clonality	Monoclonal
-----------	------------

Immunogen Information

Specificity	Endogenous
-------------	------------

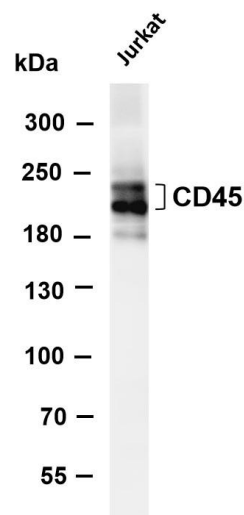
Target Information

Gene name	PTPRC
Protein Name	Receptor-type tyrosine-protein phosphatase C (Leukocyte common antigen) (L-CA) (T200) (CD antigen CD45)

Organism	Gene ID	UniProt ID
Human	5788	P08575

Cellular Localization	Membrane
Tissue specificity	Isoform 1: Detected in thymocytes. Isoform 2: Detected in thymocytes. Isoform 3: Detected in thymocytes. Isoform 4: Not detected in thymocytes. Isoform 5: Detected in thymocytes. Isoform 6: Not detected in thymocytes. Isoform 7: Detected in thymocytes. Isoform 8: Not detected in thymocytes.

Validation Data

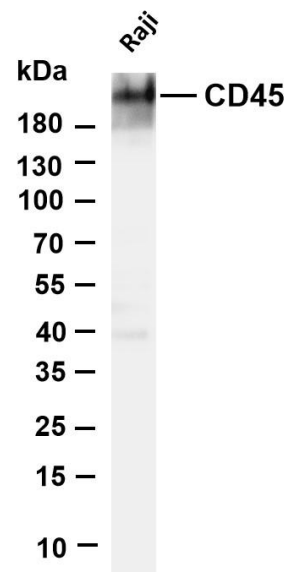


Various whole cell lysates were separated by 4-8% SDS-PAGE, and the membrane was blotted with anti-CD45 antibody. The HRP conjugated Goat anti-Rabbit IgG(H + L) antibody was used to detect the antibody.

Lane 1: Jurkat

Predicted band size: 147kDa

Observed band size: 200-240kDa

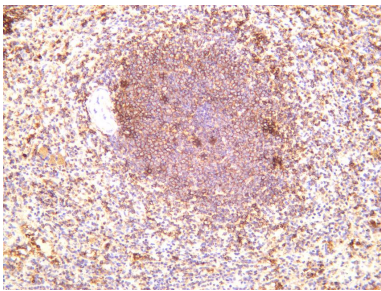


Various whole cell lysates were separated by 4-8% SDS-PAGE, and the membrane was blotted with anti-CD45 antibody. The HRP conjugated Goat anti-Rabbit IgG(H + L) antibody was used to detect the antibody.

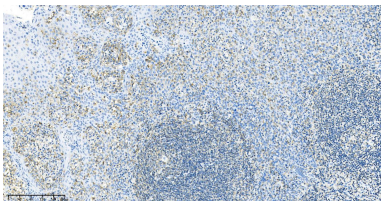
Lane 1: Raji

Predicted band size: 147kDa

Observed band size: 200-240kDa



Human spleen was stained with anti-CD45 rabbit antibody



Human tonsil was stained with anti-CD45 Rabbit antibody