

## CD36 Rabbit mAb (AR1235)

### Key Features

Host Species:	Rabbit
Reactivity:	Human, Mouse, Rat
Applications:	WB, IHC, IF, ELISA
Isotype:	IgG, Kappa
MW:	53kD (Calculated) 90kD (Observed)

### Recommended Dilution Ratios

IHC:	1:1000-4000
WB:	1:1000-5000
IF:	1:200-1000
ELISA:	1:5000-20000

### Storage

-15°C to -25°C/1 year (Do not lower than -25°C)

### Basic Information

Clonality	Monoclonal
-----------	------------

### Immunogen Information

Specificity	Endogenous
-------------	------------

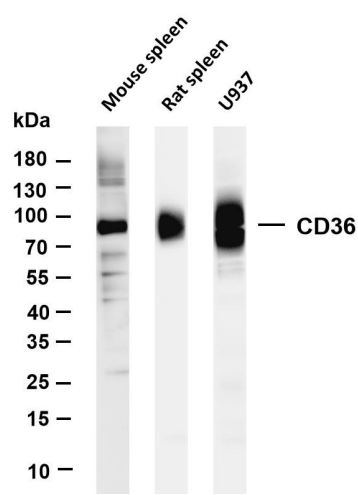
### Target Information

Gene name	CD36
Protein Name	Platelet glycoprotein 4

Organism	Gene ID	UniProt ID
Human	948	P16671
Mouse	12491	Q08857
Rat		Q07969

Cellular Localization	Membrane
Tissue specificity	Adipocyte, Liver, Mammary gland, Milk, Placenta, Platelet, Skeletal muscle

Validation Data



Various whole cell lysates were separated by 4-20% SDS-PAGE, and the membrane was blotted with anti-CD36 antibody. The HRP conjugated Goat anti-Rabbit IgG(H + L) antibody was used to detect the antibody.

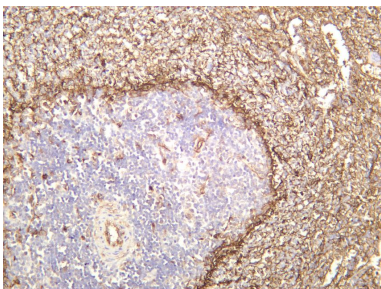
Lane 1: Mouse spleen

Lane 2: Rat spleen

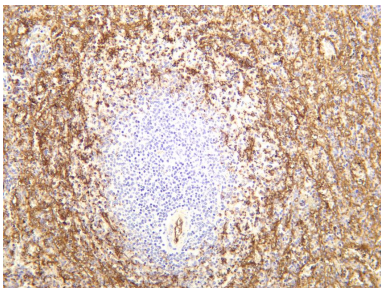
Lane 3: U937

Predicted band size: 53kDa

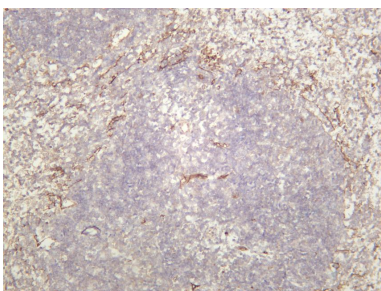
Observed band size: 90kDa



Rat spleen was stained with anti-CD36 rabbit antibody



Human spleen was stained with anti-CD36 rabbit antibody



Mouse spleen was stained with anti-CD36 rabbit antibody