

# Cytokeratin 18 Rabbit mAb (AR1208)

## Key Features

Host Species:	Rabbit
Reactivity:	Human,Mouse,Rat
Applications:	WB,IHC,IF,ELISA
Isotype:	IgG,Kappa
MW:	48kD (Calculated) 48kD (Observed)

## Recommended Dilution Ratios

IHC:	1:2000-5000
WB:	1:1000-5000
IF:	1:200-1000
ELISA:	1:5000-20000

## Storage

-15°C to -25°C/1 year (Do not lower than -25°C)

## Basic Information

Clonality	Monoclonal
-----------	------------

## Immunogen Information

Specificity	Endogenous
-------------	------------

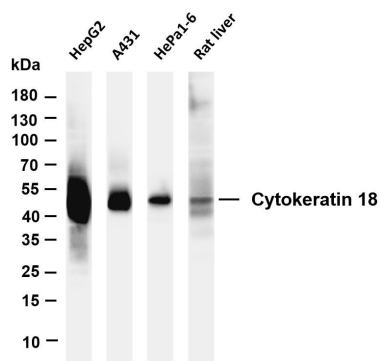
## Target Information

Gene name	KRT18
Protein Name	Keratin type I cytoskeletal 18

Organism	Gene ID	UniProt ID
Human	3875	P05783
Mouse	16668	P05784
Rat	294853	Q5BJY9

Cellular Localization	Cytoplasm
Tissue specificity	Expressed in colon, placenta, liver and very weakly in exocervix. Increased expression observed in lymph nodes of breast carcinoma.

## Validation Data



Various whole cell lysates were separated by 4-20% SDS-PAGE, and the membrane was blotted with anti-Cytokeratin 18 antibody. The HRP-conjugated Goat anti-Rabbit IgG(H + L) antibody was used to detect the antibody.

Lane 1: HepG2

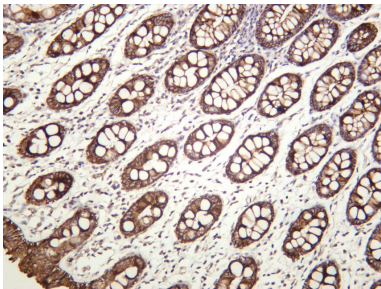
Lane 2: A431

Lane 3: Hepa1-6

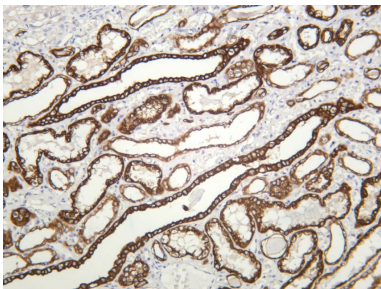
Lane 4: Rat liver

Predicted band size: 48kDa

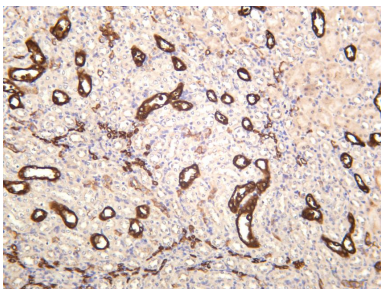
Observed band size: 48kDa



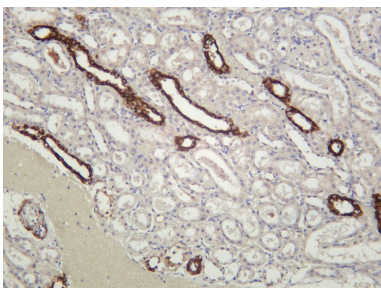
Human colon was stained with anti-Cytokeratin 18 rabbit antibody



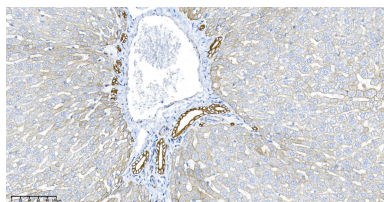
Human kidney was stained with anti-Cytokeratin 18 rabbit antibody



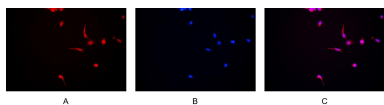
Mouse kidney was stained with anti-Cytokeratin 18 rabbit antibody



Rat kidney was stained with anti-Cytokeratin 18 rabbit antibody



Rat liver was stained with anti-Cytokeratin 18 Rabbit antibody



Immunofluorescence analysis of HEK293. Picture A: Cytokeratin 18 antibody (red). Picture B: DAPI (blue). Picture C: Merge of A+B

For Research Use Only