

HDAC1 Rabbit mAb (AR1206)

Key Features

| | |
|---------------|--------------------------------------|
| Host Species: | Rabbit |
| Reactivity: | Human, Mouse, Rat |
| Applications: | WB, IHC, IF, ELISA |
| Isotype: | IgG, Kappa |
| MW: | 55kD (Calculated) 62kD (Observed) |

Recommended Dilution Ratios

| | |
|--------|--------------|
| IHC: | 1:4000-10000 |
| WB: | 1:1000-5000 |
| IF: | 1:200-1000 |
| ELISA: | 1:5000-20000 |

Storage

-15°C to -25°C/1 year (Do not lower than -25°C)

Basic Information

| | |
|-----------|------------|
| Clonality | Monoclonal |
|-----------|------------|

Immunogen Information

| | |
|-------------|------------|
| Specificity | Endogenous |
|-------------|------------|

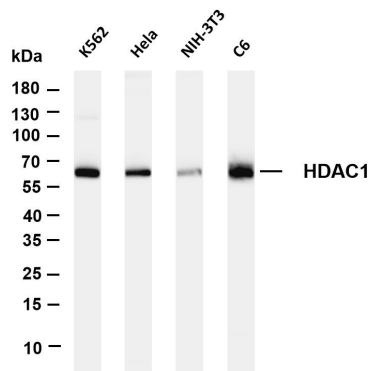
Target Information

| | |
|--------------|-----------------------|
| Gene name | HDAC1 |
| Protein Name | Histone deacetylase 1 |

| Organism | Gene ID | UniProt ID |
|----------|---------|------------|
| Human | 3065 | Q13547 |
| Mouse | 433759 | O09106 |
| Rat | 297893 | Q4QQW4 |

| | |
|-----------------------|---|
| Cellular Localization | Nucleus |
| Tissue specificity | Ubiquitous, with higher levels in heart, pancreas and testis, and lower levels in kidney and brain. |

Validation Data



Various whole cell lysates were separated by 4-20% SDS-PAGE, and the membrane was blotted with anti-HDAC1 antibody. The HRP-conjugated Goat anti-Rabbit IgG(H + L) antibody was used to detect the antibody.

Lane 1: K562

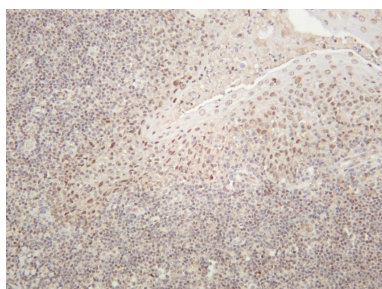
Lane 2: HeLa

Lane 3: NIH-3T3

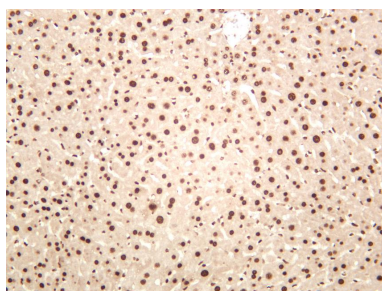
Lane 4: C6

Predicted band size: 55kDa

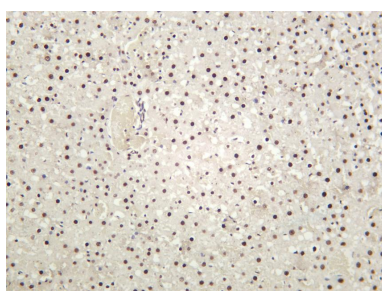
Observed band size: 62kDa



Human tonsil was stained with anti-HDAC1 rabbit antibody



Mouse liver was stained with anti-HDAC1 rabbit antibody



Rat liver was stained with anti-HDAC1 rabbit antibody

For Research Use Only