

MEK1 Rabbit mAb (AR1204)

Key Features

Host Species:	Rabbit
Reactivity:	Human,Mouse,Rat
Applications:	WB,IHC,IF,ELISA
Isotype:	IgG,Kappa
MW:	43kD (Calculated) 43kD (Observed)

Recommended Dilution Ratios

IHC:	1:2000-5000
WB:	1:1000-5000
IF:	1:200-1000
ELISA:	1:5000-20000

Storage

-15°C to -25°C/1 year (Do not lower than -25°C)

Basic Information

Clonality	Monoclonal
-----------	------------

Immunogen Information

Specificity	Endogenous
-------------	------------

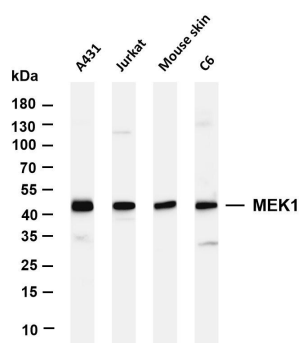
Target Information

Gene name	MAP2K1
Protein Name	Dual specificity mitogen-activated protein kinase 1

Organism	Gene ID	UniProt ID
Human	5604	Q02750
Mouse	26395	P31938
Rat	170851	Q01986

Cellular Localization	Cytoplasm, Nucleus
Tissue specificity	Widely expressed, with extremely low levels in brain.

Validation Data



Various whole cell lysates were separated by 4-20% SDS-PAGE, and the membrane was blotted with anti-MEK1 antibody. The HRP-conjugated Goat anti-Rabbit IgG(H + L) antibody was used to detect the antibody.

Lane 1: A431

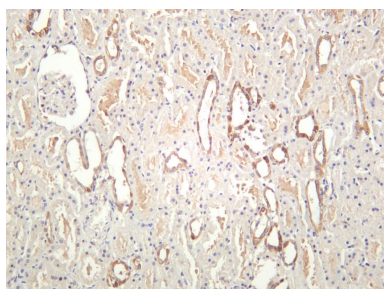
Lane 2: Jurkat

Lane 3: Mouse skin

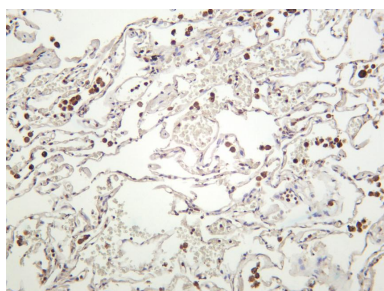
Lane 4: C6

Predicted band size: 43kDa

Observed band size: 43kDa



Human kidney was stained with anti-MEK1 rabbit antibody



Human lung was stained with anti-MEK1 rabbit antibody

For Research Use Only