

HLA-DRA Rabbit mAb (AR1196)

Key Features

Host Species:	Rabbit
Reactivity:	Human, Rat
Applications:	WB,IHC,IF,ELISA
Isotype:	IgG,Kappa
MW:	29kD (Calculated) 37kD (Observed)

Recommended Dilution Ratios

IHC:	1:1000-4000
WB:	1:1000-5000
IF:	1:200-1000
ELISA:	1:5000-20000

Storage

-15°C to -25°C/1 year (Do not lower than -25°C)

Basic Information

Clonality	Monoclonal
-----------	------------

Immunogen Information

Specificity	Endogenous
-------------	------------

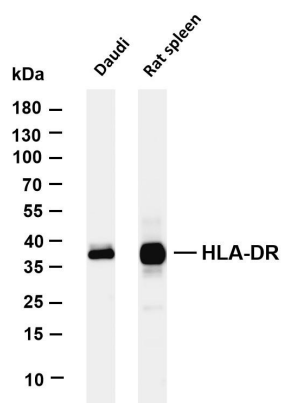
Target Information

Gene name	HLA-DRA HLA-DRA1
Protein Name	HLA class II histocompatibility antigen, DR alpha chain (MHC class II antigen DRA)

Organism	Gene ID	UniProt ID
Human	3122	P01903

Cellular Localization	Membrane
Tissue specificity	Expressed in professional APCs: macrophages, dendritic cells and B cells (at protein level) (PubMed:31495665, PubMed:15322540, PubMed:23783831). Expressed in thymic epithelial cells (at protein level) (PubMed:23783831).

Validation Data



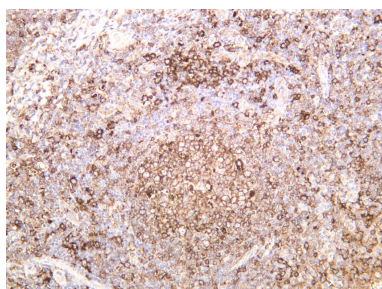
Various whole cell lysates were separated by 4-20% SDS-PAGE, and the membrane was blotted with anti-HLA-DR antibody. The HRP-conjugated Goat anti-Rabbit IgG(H + L) antibody was used to detect the antibody.

Lane 1: Daudi

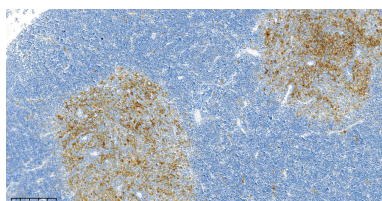
Lane 2: Rat spleen

Predicted band size: 29kDa

Observed band size: 37kDa



Human tonsil was stained with anti-HLA-DR rabbit antibody



Rat thymus was stained with anti-HLA-DR Rabbit antibody

For Research Use Only