

## β-Galactosidase Rabbit mAb (AR1173)

### Key Features

Host Species:	Rabbit
Reactivity:	Human,Mouse,Rat
Applications:	WB,IHC,IF,ELISA
Isotype:	IgG,Kappa
MW:	76kD (Calculated) 100kD (Observed)

### Recommended Dilution Ratios

IHC:	1:2000-10000
WB:	1:1000-5000
IF:	1:200-1000
ELISA:	1:5000-20000

### Storage

-15°C to -25°C/1 year (Do not lower than -25°C)

### Basic Information

Clonality	Monoclonal
-----------	------------

### Immunogen Information

Specificity	Endogenous
-------------	------------

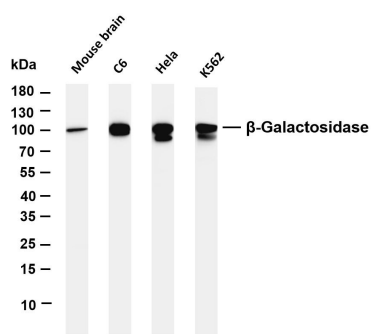
### Target Information

Gene name	GLB1
Protein Name	Beta-galactosidase

Organism	Gene ID	UniProt ID
Human	2720	P16278
Mouse		P23780

Cellular Localization	Lysosome
Tissue specificity	Detected in placenta (at protein level) (PubMed:8383699). Detected in fibroblasts and testis (PubMed:2511208).

## Validation Data



Various whole cell lysates were separated by 4-20% SDS-PAGE, and the membrane was blotted with anti- $\beta$ -Galactosidase antibody. The HRP conjugated Goat anti-Rabbit IgG(H + L) antibody was used to detect the antibody.

Lane 1: Mouse brain

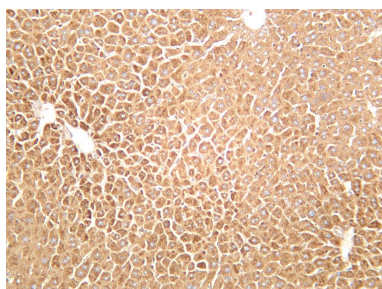
Lane 2: C6

Lane 3: Hela

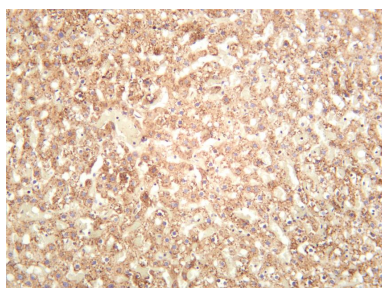
Lane 4: K562

Predicted band size: 76kDa

Observed band size: 100kDa



Mouse liver was stained with anti- $\beta$ -Galactosidase rabbit antibody



Rat liver was stained with anti- $\beta$ -Galactosidase rabbit antibody

For Research Use Only