

α Tubulin Rabbit mAb-Loading Control (AR1161)

Key Features

Host Species:	Rabbit
Reactivity:	Human,Mouse,Rat
Applications:	WB,IHC,IF,ELISA
Isotype:	IgG,Kappa
MW:	50kD (Calculated) 50kD (Observed)

Recommended Dilution Ratios

IHC:	1:200-1000
WB:	1:1000-5000
IF:	1:200-1000
ELISA:	1:5000-20000

Storage

-15°C to -25°C/1 year (Do not lower than -25°C)

Basic Information

Clonality	Monoclonal
-----------	------------

Immunogen Information

Specificity	Endogenous
-------------	------------

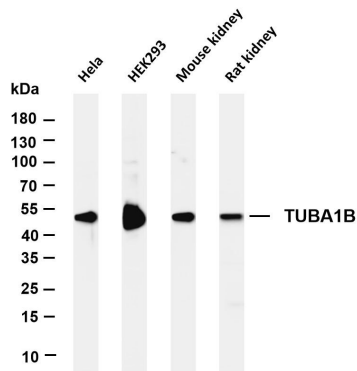
Target Information

Gene name	TUBA1B
Protein Name	Tubulin alpha-1B chain (Alpha-tubulin ubiquitous) (Tubulin K-alpha -1) (Tubulin alpha ubiquitous chain)

Organism	Gene ID	UniProt ID
Human	7277	P68363
Mouse		P05213
Rat		Q6P9V9

Cellular Localization	Cytoplasm
Tissue specificity	Brain, Cajal-Retzius cell, Colon, Embryonic kidney, Eye, Fetal brain cortex, Keratinocyte

Validation Data



Various whole cell lysates were separated by 4-20% SDS-PAGE, and the membrane was blotted with anti-TUBA1B antibody. The HRP-conjugated Goat anti-Rabbit IgG(H + L) antibody was used to detect the antibody.

Lane 1: HeLa

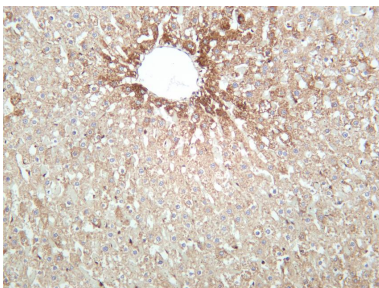
Lane 2: HEK293

Lane 3: Mouse kidney

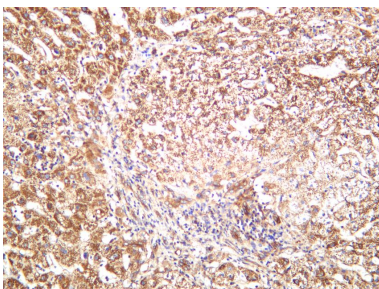
Lane 4: Rat kidney

Predicted band size: 50kDa

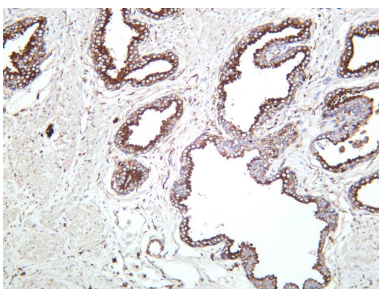
Observed band size: 50kDa



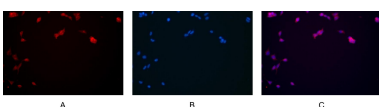
Rat liver was stained with anti-TUBA1B rabbit antibody



Human liver was stained with anti-TUBA1B rabbit antibody



Human prostate was stained with anti-TUBA1B rabbit antibody



Immunofluorescence analysis of HEK293. Picture A: TUBA1B antibody (red). Picture B: DAPI (blue). Picture C: Merge of A+B

For Research Use Only