

SOD1 Rabbit mAb (AR1154)

Key Features

Host Species:	Rabbit
Reactivity:	Human, Mouse, Rat
Applications:	WB, IHC, IF, ELISA
Isotype:	IgG, Kappa
MW:	16kD (Calculated) 16kD (Observed)

Recommended Dilution Ratios

IHC:	1:100-5000
WB:	1:2000-10000
IF:	1:200-1000
ELISA:	1:5000-20000

Storage

-15°C to -25°C/1 year (Do not lower than -25°C)

Basic Information

Clonality	Monoclonal
-----------	------------

Immunogen Information

Specificity	Endogenous
-------------	------------

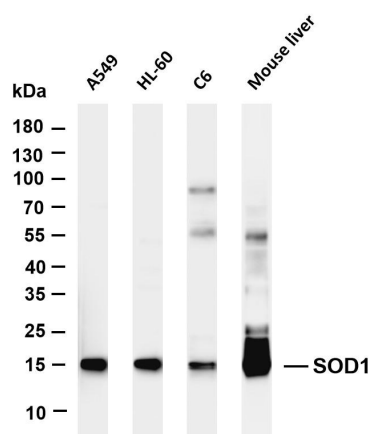
Target Information

Gene name	SOD1
Protein Name	Superoxide dismutase [Cu-Zn]

Organism	Gene ID	UniProt ID
Human	6647	P00441
Mouse	20655	P08228
Rat	24786	P07632

Cellular Localization	Cytoplasm, Nucleus
Tissue specificity	Colon, Fetal brain cortex, Placenta

Validation Data



Various whole cell lysates were separated by 4-20% SDS-PAGE, and the membrane was blotted with anti-SOD1 antibody. The HRP-conjugated Goat anti-Rabbit IgG(H + L) antibody was used to detect the antibody.

Lane 1: A549

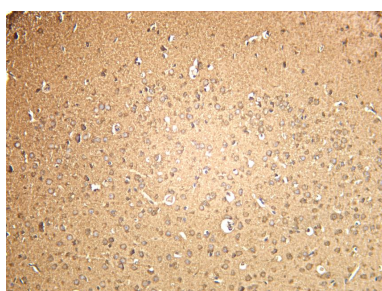
Lane 2: HL-60

Lane 3: C6

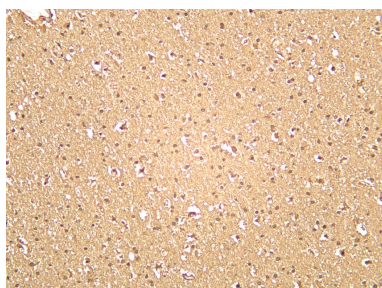
Lane 4: Mouse liver

Predicted band size: 16kDa

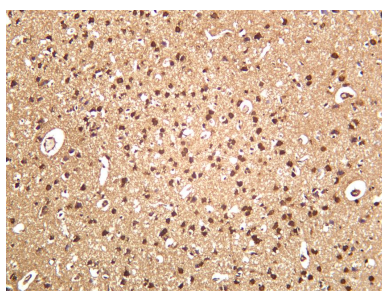
Observed band size: 16kDa



Mouse brain was stained with anti-SOD1 rabbit antibody



Human brain was stained with anti-SOD1 rabbit antibody



Rat brain was stained with anti-SOD1 rabbit antibody

For Research Use Only