

## CHOP Rabbit mAb (AR1153)

### Key Features

Host Species:	Rabbit
Reactivity:	Human, Mouse, Rat
Applications:	WB, IHC, IF, ELISA
Isotype:	IgG, Kappa
MW:	19kD (Calculated) 30kD (Observed)

### Recommended Dilution Ratios

IHC:	1:1000-4000
WB:	1:1000-5000
IF:	1:200-1000
ELISA:	1:5000-20000

### Storage

-15°C to -25°C/1 year (Do not lower than -25°C)

### Basic Information

Clonality	Monoclonal
-----------	------------

### Immunogen Information

Specificity	Endogenous
-------------	------------

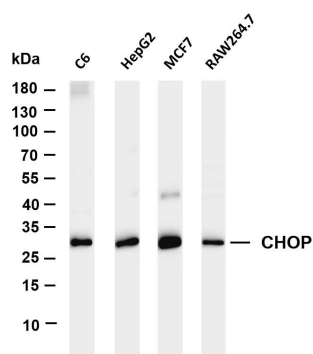
### Target Information

Gene name	DDIT3 CHOP
Protein Name	DDIT3

Organism	Gene ID	UniProt ID
Human	1649	P35638
Mouse		P35639
Rat		Q62857

Cellular Localization	Cytoplasm, Nucleus
Tissue specificity	Muscle, Skeletal muscle

## Validation Data



Various whole cell lysates were separated by 4-20% SDS-PAGE, and the membrane was blotted with anti-CHOP antibody. The HRP-conjugated Goat anti-Rabbit IgG(H + L) antibody was used to detect the antibody.

Lane 1: C6

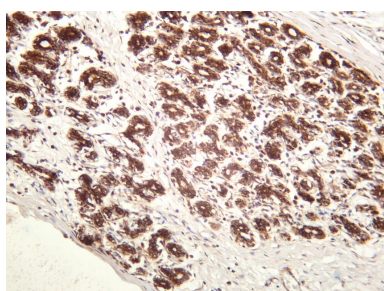
Lane 2: HepG2

Lane 3: MCF7

Lane 4: RAW264.7

Predicted band size: 19kDa

Observed band size: 30kDa



Human breast carcinoma was stained with anti-CHOP rabbit antibody

For Research Use Only