

LAMP1 Rabbit mAb (AR1152)

Key Features

Host Species:	Rabbit
Reactivity:	Human
Applications:	WB,IHC,IF,ELISA
Isotype:	IgG,Kappa
MW:	45kD (Calculated) 100kD (Observed)

Recommended Dilution Ratios

IHC:	1:200-1000
WB:	1:1000-5000
IF:	1:200-1000
ELISA:	1:5000-20000

Storage

-15°C to -25°C/1 year (Do not lower than -25°C)

Basic Information

Clonality	Monoclonal
-----------	------------

Immunogen Information

Specificity	Endogenous
-------------	------------

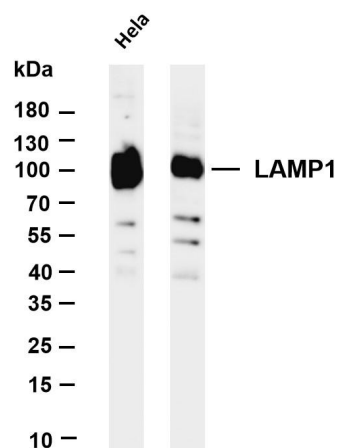
Target Information

Gene name	LAMP1
Protein Name	Lysosome-associated membrane glycoprotein 1

Organism	Gene ID	UniProt ID
Human	3916	P11279
Mouse		P11438
Rat	25328	P14562

Cellular Localization	Membrane
Tissue specificity	Brain, Liver, Pancreas, Placenta, Plasma, Testis

Validation Data



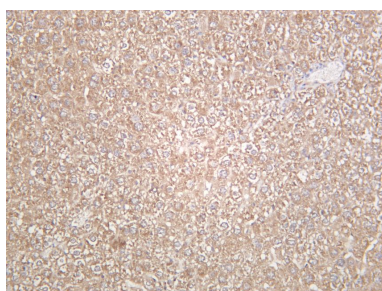
Various whole cell lysates were separated by 4-20% SDS-PAGE, and the membrane was blotted with anti-LAMP1 antibody. The HRP-conjugated Goat anti-Rabbit IgG(H + L) antibody was used to detect the antibody.

Lane 1: HeLa

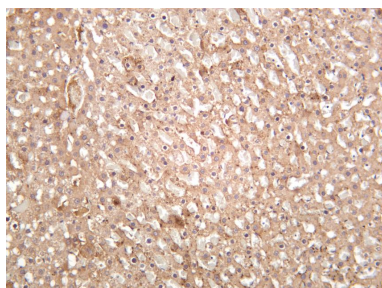
Lane 2: Jurkat

Predicted band size: 45kDa

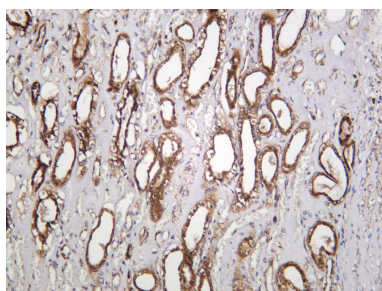
Observed band size: 100kDa



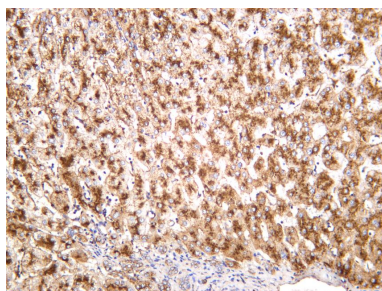
Mouse liver was stained with anti-LAMP1 rabbit antibody



Rat liver was stained with anti-LAMP1 rabbit antibody



Human kidney was stained with anti-LAMP1 rabbit antibody



Human liver was stained with anti-LAMP1 rabbit antibody