

PGC1 β Rabbit mAb (AR1139)

Key Features

Host Species:	Rabbit
Reactivity:	Human, Mouse, Rat
Applications:	WB, IP, ELISA
Isotype:	IgG, Kappa
MW:	113kD (Calculated) 113kD (Observed)

Recommended Dilution Ratios

WB:	1:1000-5000
IP:	1:50-200
ELISA:	1:5000-20000

Storage

-15°C to -25°C/1 year (Do not lower than -25°C)

Basic Information

Clonality	Monoclonal
-----------	------------

Immunogen Information

Specificity	Endogenous
-------------	------------

Target Information

Gene name	PPARGC1B PERC PGC1 PGC1B PPARGC1
-----------	----------------------------------

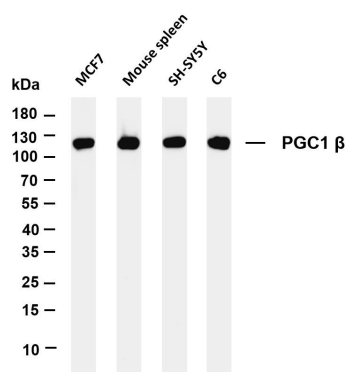
Protein Name	PPARGC1B
--------------	----------

Organism	Gene ID	UniProt ID
Human	133522	Q86YN6
Mouse	170826	Q8VHJ7
Rat	291567	Q811R2

Cellular Localization	Nucleus
-----------------------	---------

Tissue specificity	Ubiquitous with higher expression in heart, brain and skeletal muscle.
--------------------	--

Validation Data



Various whole cell lysates were separated by 4-20% SDS-PAGE, and the membrane was blotted with anti-PGC1 β antibody. The HRP-conjugated Goat anti-Rabbit IgG(H + L) antibody was used to detect the antibody.

Lane 1: MCF7

Lane 2: Mouse spleen

Lane 3: SH-SY5Y

Lane 4: C6

Predicted band size: 113kDa

Observed band size: 113kDa

For Research Use Only