

# Glutamine Synthetase Rabbit mAb (AR1132)

## Key Features

Host Species:	Rabbit
Reactivity:	Human,Mouse,Rat
Applications:	WB,IHC,IF,ELISA
Isotype:	IgG,Kappa
MW:	42kD (Calculated) 42kD (Observed)

## Recommended Dilution Ratios

IHC:	1:1000-4000
WB:	1:1000-5000
IF:	1:200-1000
ELISA:	1:5000-20000

## Storage

-15°C to -25°C/1 year (Do not lower than -25°C)

## Basic Information

Clonality	Monoclonal
-----------	------------

## Immunogen Information

Specificity	Endogenous
-------------	------------

## Target Information

Gene name	GLUL GLNS
Protein Name	GLUL

Organism	Gene ID	UniProt ID
Human	2752	P15104
Mouse	14645	P15105
Rat	24957	P09606

Cellular Localization	Cytoplasm, Membrane
Tissue specificity	Expressed in endothelial cells.

## Validation Data



Various whole cell lysates were separated by 4-20% SDS-PAGE, and the membrane was blotted with anti-Glutamine Synthetase antibody. The HRP-conjugated Goat anti-Rabbit IgG(H + L) antibody was used to detect the antibody.

Lane 1: HepG2

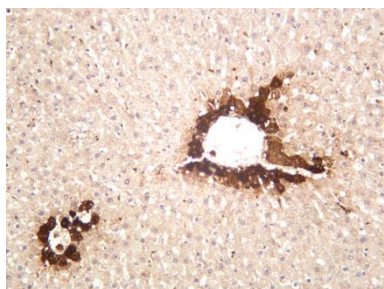
Lane 2: Jurkat

Lane 3: Rat liver

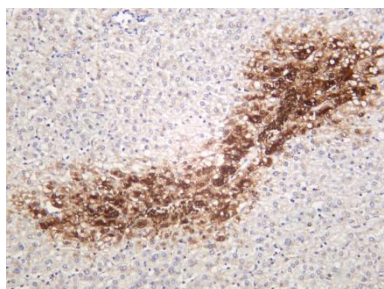
Lane 4: Mouse liver

Predicted band size: 42kDa

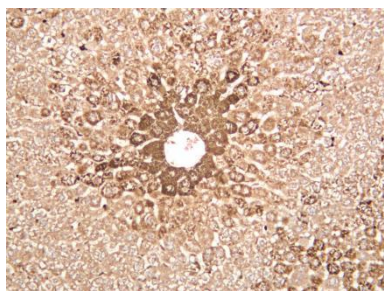
Observed band size: 42kDa



Rat liver was stained with anti-Glutamine Synthetase rabbit antibody



Human hepatocellular carcinoma was stained with anti-Glutamine Synthetase rabbit antibody



Mouse liver was stained with anti-Glutamine Synthetase rabbit antibody

For Research Use Only