

TLS/FUS Rabbit mAb (AR1124)

Key Features

Host Species:	Rabbit
Reactivity:	Human,Mouse,Rat
Applications:	WB,IHC,IF,ELISA
Isotype:	IgG,Kappa
MW:	53 kD (Calculated) 70 kD (Observed)

Recommended Dilution Ratios

IHC:	1:500-2000
WB:	1:500-2000
IF:	1:200-1000
ELISA:	1:5000-20000

Storage

-15°C to -25°C/1 year (Do not lower than -25°C)

Basic Information

Clonality	Monoclonal
-----------	------------

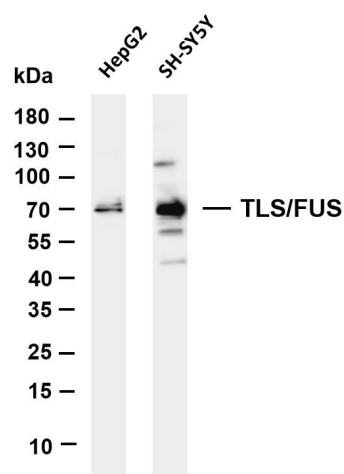
Immunogen Information

Specificity	Endogenous
-------------	------------

Target Information

Gene name	FUS TLS		
	Organism	Gene ID	UniProt ID
	Human	2521	P35637
	Mouse	233908	P56959
Cellular Localization	Nucleus		
Tissue specificity	Ubiquitous.		

Validation Data



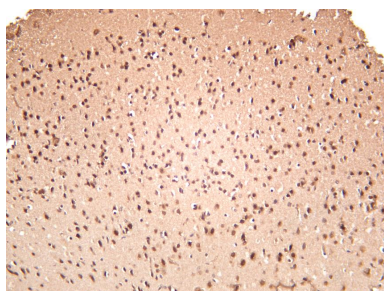
Various whole cell lysates were separated by 4-20% SDS-PAGE, and the membrane was blotted with anti-TLS/FUS antibody. The HRP-conjugated Goat anti-Rabbit IgG(H + L) antibody was used to detect the antibody.

Lane 1: HepG2

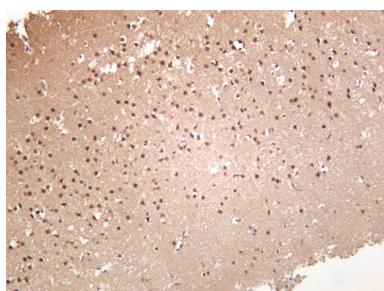
Lane 2: SH-SY5Y

Predicted band size: 53kDa

Observed band size: 70kDa



Mouse brain was stained with anti-TLS/FUS rabbit antibody



Rat brain was stained with anti-TLS/FUS rabbit antibody

For Research Use Only