

ISG15 Rabbit mAb (AR1111)

Key Features

| | |
|---------------|--------------------------------------|
| Host Species: | Rabbit |
| Reactivity: | Human |
| Applications: | WB,IF,ELISA |
| Isotype: | IgG,Kappa |
| MW: | 18kD (Calculated) 18kD (Observed) |

Recommended Dilution Ratios

| | |
|--------|--------------|
| WB: | 1:500-2000 |
| IF: | 1:200-1000 |
| ELISA: | 1:5000-20000 |

Storage

-15°C to -25°C/1 year (Do not lower than -25°C)

Basic Information

| | |
|-----------|------------|
| Clonality | Monoclonal |
|-----------|------------|

Immunogen Information

| | |
|-------------|------------|
| Specificity | Endogenous |
|-------------|------------|

Target Information

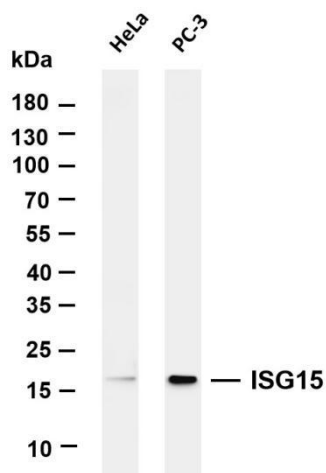
| | |
|--------------|-----------------|
| Gene name | ISG15 G1P2 UCRP |
| Protein Name | ISG15 |

| Organism | Gene ID | UniProt ID |
|----------|---------|------------|
| Human | 9636 | P05161 |
| Mouse | | Q64339 |

| | |
|-----------------------|--|
| Cellular Localization | Cytoplasm Detected in lymphoid cells, striated and smooth muscle, several epithelia and neurons. Expressed in neutrophils, monocytes and lymphocytes. Enhanced expression seen in pancreatic adenocarcinoma, endometrial cancer, and bladder cancer, as compared to noncancerous tissue. In bladder cancer, the increase in expression exhibits a striking positive correlation with more |
| Tissue specificity | |

advanced stages of the disease.

Validation Data



Various whole cell lysates were separated by 4-20% SDS-PAGE, and the membrane was blotted with anti-ISG15 antibody. The HRP conjugated Goat anti-Rabbit IgG(H + L) antibody was used to detect the antibody.

Lane 1: HeLa

Lane 2: PC-3

Predicted band size: 18kDa

Observed band size: 18kDa

For Research Use Only