

K-Ras Rabbit mAb (AR1974)

Key Features

Host Species:	Rabbit
Reactivity:	Human,Mouse,Rat
Applications:	WB,IHC,IF,ELISA
Isotype:	IgG,Kappa
MW:	22 kD (Calculated) 22 kD (Observed)

Recommended Dilution Ratios

IHC:	1:100-500
WB:	1:2000-10000
IF:	1:200-1000
ELISA:	1:5000-20000

Storage

-15°C to -25°C/1 year (Do not lower than -25°C)

Basic Information

Clonality	Monoclonal
-----------	------------

Immunogen Information

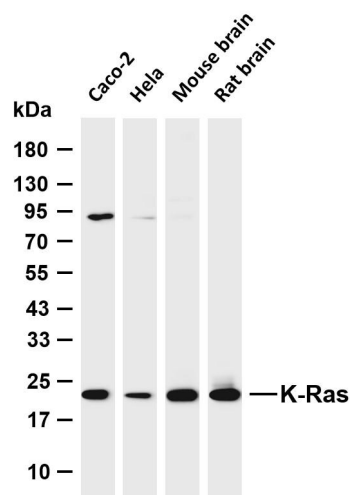
Specificity	Endogenous
-------------	------------

Target Information

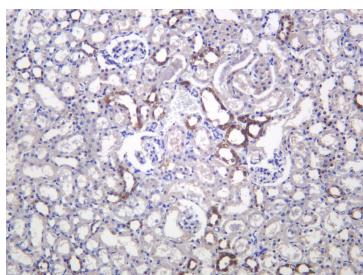
Gene name	KRAS
Protein Name	v-Ki-ras2 Kirsten rat sarcoma viral oncogene homolog

	Organism	Gene ID	UniProt ID
	Human	3845	P01116
	Mouse	16653	P32883
	Rat		P08644
Cellular Localization	Cell membrane ; Lipid-anchor ; Cytoplasmic side . Endomembrane system . Cytoplasm, cytosol . ; [Isoform 2B]: Cell membrane ; Lipid-anchor		
Tissue specificity	Brain,Cervix carcinoma,Colon tumor,Lung,Lung carcinom		carcinoma,Gallbladder

Validation Data



Various whole cell lysates were separated by 4-20% SDS-PAGE, and the membrane was blotted with anti-K-Ras antibody. The HRP conjugated Goat anti-Rabbit IgG (H + L) antibody was used to detect the antibody. Lane 1: Caco-2 Lane 2: HeLa Lane 3: Mouse brain Lane 4: Rat brain Predicted band size: 22kDa Observed band size: 22kD



Rat kidney was stained with anti-K-Ras Rabbit antibody

For Research Use Only