

SR-2A Rabbit pAb (AR20090)

Key Features

Host Species:	Rabbit
Reactivity:	Human
Applications:	IHC,IF,ELISA
Isotype:	IgG
MW:	53kD (Calculated)

Recommended Dilution Ratios

IHC:	1:100-300
IF:	1: 200-1000
ELISA:	1:5000

Storage

-15°C to -25°C/1 year (Do not lower than -25°C)

Basic Information

Clonality	Polyclonal
-----------	------------

Immunogen Information

Specificity	SR-2A Polyclonal Antibody detects endogenous levels of SR-2A protein.
-------------	---

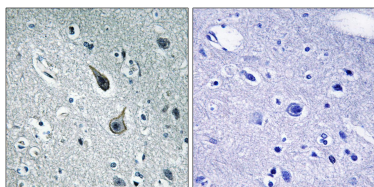
Target Information

Gene name	HTR2A
Protein Name	5-hydroxytryptamine receptor 2A

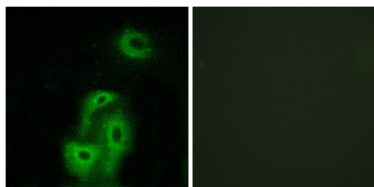
Organism	Gene ID	UniProt ID
Human	3356	P28223
Mouse		P35363

Cellular Localization	Cell membrane ; Multi-pass membrane protein . Cell projection, dendrite . Cell projection, axon . Cytoplasmic vesicle . Membrane, caveola . Cell junction, synapse, presynapse .
Tissue specificity	Detected in brain cortex (at protein level). Detected in blood platelets.

Validation Data



Immunohistochemistry analysis of paraffin-embedded human brain tissue, using 5-HT-2A Antibody. The picture on the right is blocked with the synthesized peptide.



Immunofluorescence analysis of A549 cells, using 5-HT-2A Antibody. The picture on the right is blocked with the synthesized peptide.

For Research Use Only