

NKX3.1 Mouse mAb (AM10017)

Key Features

Host Species:	Mouse
Reactivity:	Human
Applications:	IHC, WB, IF, ELISA
Isotype	IgG1, Kappa
MW:	26kD (Calculated) 32kD (Observed)

Recommended Dilution Ratios

WB:	1:500-2000
IHC:	1:200-1000
IF:	1:100-500
ELISA:	1:1000-5000

Storage

-15°C to -25°C/1 year (Do not lower than -25°C)

Basic Information

Clonality	Monoclonal
-----------	------------

Immunogen Information

Specificity	The antibody can specifically recognize human NKX3.1 protein.
-------------	---

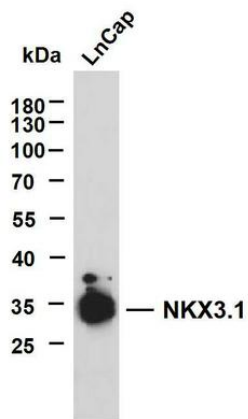
Target Information

Gene name	NKX3-1 NKX3.1 NKX3A
Protein Name	Homeobox protein Nkx-3.1

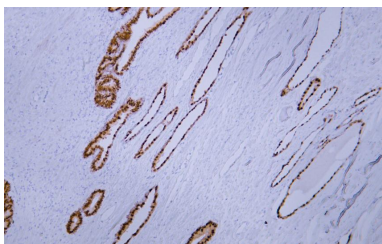
Organism	Gene ID	UniProt ID
Human	4824	Q99801
Mouse		P97436

Cellular Localization	Nuclear
Tissue specificity	Highly expressed in the prostate and, at a lower level, in the testis.

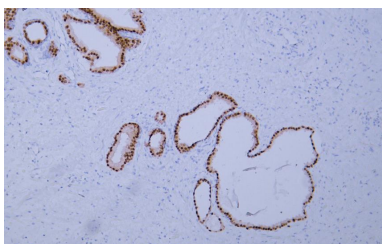
Validation Data



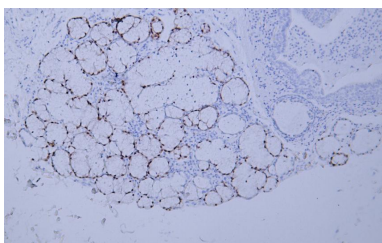
LnCap whole cell lysates were separated by 10% SDS-PAGE, and the membrane was blotted with anti-NKX3.1 (ABT267) antibody. The HRPconjugated Goat anti-Mouse IgG(H + L) antibody was used to detect the antibody. Lane 1: LnCap



Human prostate tissue was stained with Anti-NKX3.1 (ABT267) Antibody



Human prostatic adenocarcinoma tissue was stained with Anti-NKX3.1 (ABT267) Antibody



Human salivary gland tissue was stained with Anti-NKX3.1 (ABT267) Antibody

For Research Use Only