

# Caspase-9 Rabbit mAb (AR1105)

## Key Features

Host Species:	Rabbit
Reactivity:	Human, Mouse
Applications:	WB, IHC, IF, ELISA
Isotype:	IgG, Kappa
MW:	46kD (Calculated) 40kD (Observed)

## Recommended Dilution Ratios

WB:	1:1000-5000
IHC:	1:500-1000
IF:	1:200-1000
ELISA:	1:5000-20000

## Storage

-15°C to -25°C/1 year (Do not lower than -25°C)

## Basic Information

Clonality	Monoclonal
-----------	------------

## Immunogen Information

Specificity	Endogenous
-------------	------------

## Target Information

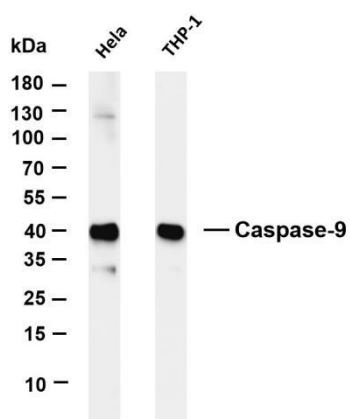
Gene name	CASP9
Protein Name	Caspase9

Organism	Gene ID	UniProt ID
Human	842	P55211
Rat	58918	Q9JHK1

Cellular Localization	Cytoplasm
-----------------------	-----------

Tissue specificity	Ubiquitous, with highest expression in the heart, moderate expression in liver, skeletal muscle, and pancreas. Low levels in all other tissues. Within the heart, specifically expressed in myocytes.
--------------------	---

## Validation Data



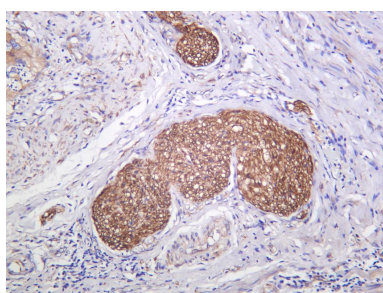
Various whole cell lysates were separated by 4-20% SDS-PAGE, and the membrane was blotted with anti-Caspase-9 antibody. The HRP conjugated Goat anti-Rabbit IgG(H + L) antibody was used to detect the antibody.

Lane 1: HeLa

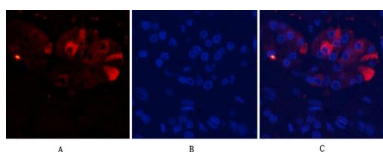
Lane 2: THP-1

Predicted band size: 46kDa

Observed band size: 40kDa



Human cervix carcinoma was stained with anti-Caspase-9 Rabbit antibody



Immunofluorescence analysis of human-stomach-cancer tissue. 1, Cleaved Caspase-9 (D353) Antibody (red) was diluted at 1:200 (4°C, overnight). 2, Cy3 labeled Secondary antibody was diluted at 1:300 (room temperature, 50 min). 3, Picture B: DAPI (blue) 10 min. Picture A: Target. Picture B: DAPI. Picture C: merge of A+B

For Research Use Only