

Otubain-1 Rabbit pAb (AR20089)

Key Features

Host Species:	Rabbit
Reactivity:	Human, Mouse, Rat
Applications:	WB, ELISA
Isotype:	IgG
MW:	31kDa (Observed)

Recommended Dilution Ratios

WB:	1:500-2000
ELISA:	1:10000

Storage

-15°C to -25°C/1 year (Do not lower than -25°C)

Basic Information

Clonality	Polyclonal
-----------	------------

Immunogen Information

Specificity	Otubain-1 Polyclonal Antibody detects endogenous levels of Otubain-1 protein
-------------	--

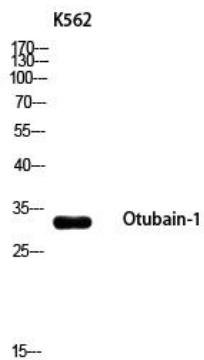
Target Information

Gene name	OTUB1
Protein Name	Ubiquitin thioesterase OTUB1

Organism	Gene ID	UniProt ID
Human	55611	Q96FW1
Mouse	107260	Q7TQI3
Rat	293705	B2RYG6

Cellular Localization	Cytoplasm .
Tissue specificity	Isoform 1 is ubiquitous. Isoform 2 is expressed only in lymphoid tissues such as tonsils, lymph nodes and spleen, as well as peripheral blood mononuclear cells.

Validation Data



Western blot analysis of K562 using Otubain-1 antibody.
Secondary Antibody was diluted at 1:20000

For Research Use Only