

## SIRT3 Rabbit mAb (AR1097)

### Key Features

Host Species:	Rabbit
Reactivity:	Human, Mouse, Rat
Applications:	WB, IHC, IF, ELISA
Isotype:	IgG, Kappa
MW:	44kD (Calculated) 28kD (Observed)

### Recommended Dilution Ratios

IHC	1:200-1000
WB:	1:1000-5000
IF:	1:200-1000
ELISA:	1:5000-20000

### Storage

-15°C to -25°C/1 year (Do not lower than -25°C)

### Basic Information

Clonality	Monoclonal
-----------	------------

### Immunogen Information

Specificity	Endogenous
-------------	------------

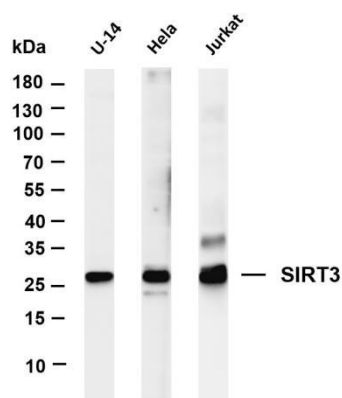
### Target Information

Gene name	SIRT3
Protein Name	NAD-dependent protein deacetylase sirtuin-3 mitochondrial

Organism	Gene ID	UniProt ID
Human	23410	Q9NTG7
Mouse		Q8R104

Cellular Localization	Mitochondrion matrix
Tissue specificity	Widely expressed.

## Validation Data



Various whole cell lysates were separated by 4-20% SDS-PAGE, and the membrane was blotted with anti-SIRT3 antibody. The HRP conjugated Goat anti-Rabbit IgG(H + L) antibody was used to detect the antibody.

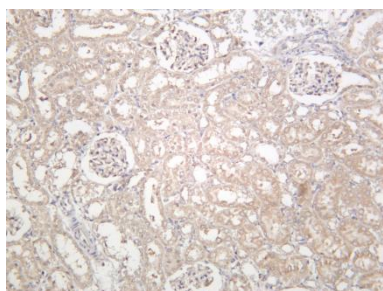
Lane 1: U-14

Lane 2: HeLa

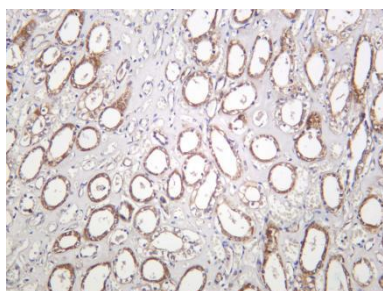
Lane 3: Jurkat

Predicted band size: 44kDa

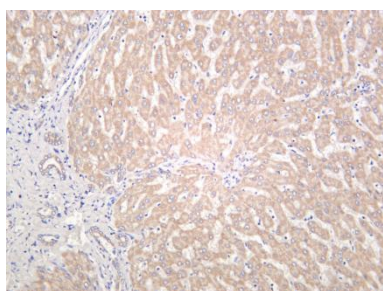
Observed band size: 28kDa



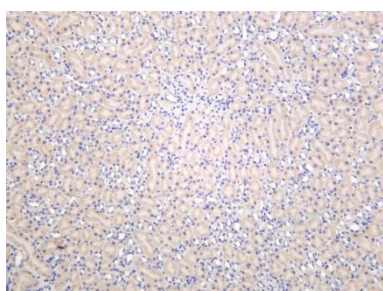
Rat liver was stained with anti-SIRT3 rabbit antibody



Human kidney was stained with anti-SIRT3 rabbit antibody



Human liver was stained with anti-SIRT3 rabbit antibody



Mouse liver was stained with anti-SIRT3 rabbit antibody