

LC3B Rabbit mAb (AR1094)

Key Features

Host Species:	Rabbit
Reactivity:	Human,Mouse,Rat
Applications:	WB,IHC,IF,ELISA
Isotype:	IgG,Kappa
MW:	14kD,16kD (Calculated) 14kD,16kD (Observed)

Recommended Dilution Ratios

IHC	1:200-1000
WB:	1:1000-5000
IF:	1:200-1000
ELISA:	1:5000-20000

Storage

-15°C to -25°C/1 year (Do not lower than -25°C)

Basic Information

Clonality	Monoclonal
-----------	------------

Immunogen Information

Specificity	Endogenous
-------------	------------

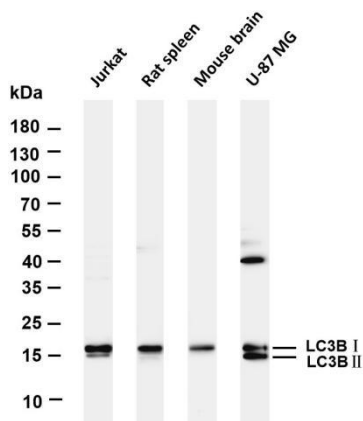
Target Information

Gene name	MAP1LC3B
Protein Name	Microtubule-associated protein 1 light chain 3 beta

Organism	Gene ID	UniProt ID
Human	81631	Q9GZQ8
Mouse		Q9CQV6

Cellular Localization	Cytoplasm
Tissue specificity	Most abundant in heart, brain, skeletal muscle and testis. Little expression observed in liver.

Validation Data



Various whole cell lysates were separated by 4-20% SDS-PAGE, and the membrane was blotted with anti-LC3B antibody. The HRP conjugated Goat anti-Rabbit IgG(H + L) antibody was used to detect the antibody.

Lane 1: Jurkat

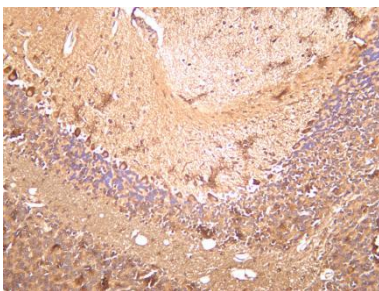
Lane 2: Rat spleen

Lane 3: Mouse brain

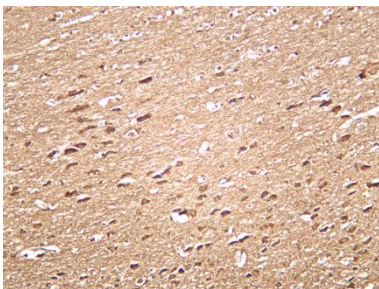
Lane 4: U-87MG

Predicted band size: 14,16kDa

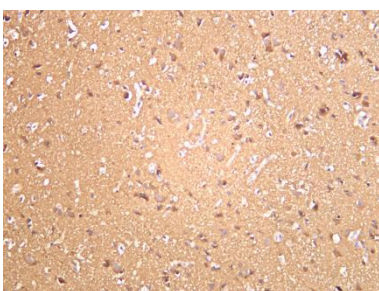
Observed band size: 14,16kDa



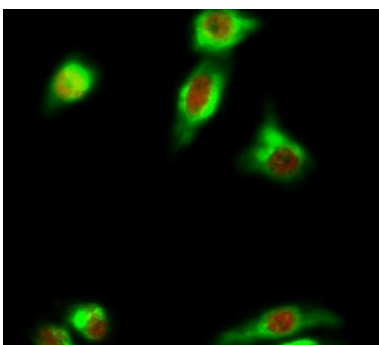
Mouse brain was stained with anti-LC3B rabbit antibody



Rat brain was stained with anti-LC3B rabbit antibody

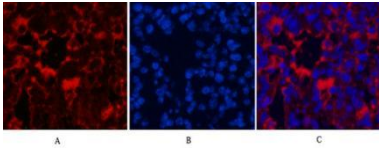


Human brain was stained with anti-LC3B rabbit antibody



Immunofluorescence analysis of Hela cell.

1. Cleaved-PARP-1 (D214) Antibody(red) was diluted at 1:200(4° overnight). LC3B Antibody(green) was diluted at 1:200(4° overnight).
2. Goat Anti Rabbit Alexa Fluor 594 was diluted at 1:1000(room temperature, 50min). Goat Anti Mouse Alexa Fluor 488 was diluted at 1:1000(room temperature, 50min).



Immunofluorescence analysis of Mouse-lung tissue.

1. LC3B Antibody(red) was diluted at 1:200(4°C, overnight).
2. Cy3 labeled Secondary antibody was diluted at 1:300(room temperature, 50min).
3. DAPI (blue) 10min.

Picture A: Target. Picture B: DAPI. Picture C: merge of A+B

For Research Use Only