

Neurofilament heavy polypeptide

Rabbit mAb (AR1090)

Key Features

| | |
|---------------|--|
| Host Species: | Rabbit |
| Reactivity: | Human,Mouse,Rat |
| Applications: | WB,IHC,IF,ELISA |
| Isotype: | IgG,Kappa |
| MW: | 111kD (Calculated) 180-200kD (Observed) |

Recommended Dilution Ratios

| | |
|--------|--------------|
| IHC | 1:200-1000 |
| WB: | 1:1000-5000 |
| IF: | 1:200-1000 |
| ELISA: | 1:5000-20000 |

Storage

-15°C to -25°C/1 year (Do not lower than -25°C)

Basic Information

| | |
|-----------|------------|
| Clonality | Monoclonal |
|-----------|------------|

Immunogen Information

| | |
|-------------|------------|
| Specificity | Endogenous |
|-------------|------------|

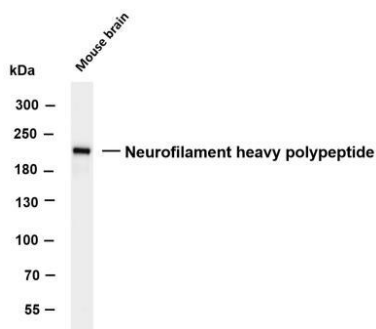
Target Information

| | |
|--------------|--------------------|
| Gene name | NEFH |
| Protein Name | Brain, Eye, Testis |

| Organism | Gene ID | UniProt ID |
|----------|---------|------------|
| Human | 4744 | P12036; |
| Mouse | | P19246 |

| | |
|-----------------------|--------------------|
| Cellular Localization | Cytoplasm |
| Tissue specificity | Brain, Eye, Testis |

Validation Data

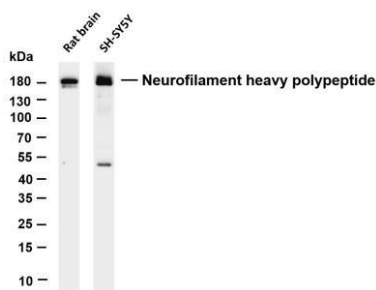


Various whole cell lysates were separated by 4-8% SDS-PAGE, and the membrane was blotted with anti-Neurofilament heavy polypeptide antibody. The HRP-conjugated Goat anti-Rabbit IgG(H + L) antibody was used to detect the antibody.

Lane 1: Mouse brain

Predicted band size: 111kDa

Observed band size: 200kDa



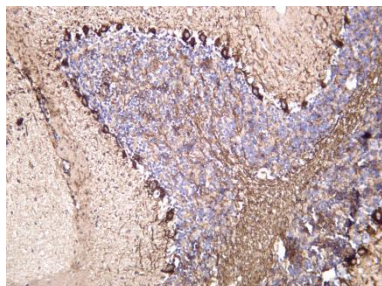
Various whole cell lysates were separated by 4-20% SDS-PAGE, and the membrane was blotted with anti-Neurofilament heavy polypeptide antibody. The HRP-conjugated Goat anti-Rabbit IgG(H + L) antibody was used to detect the antibody.

Lane 1: Rat brain

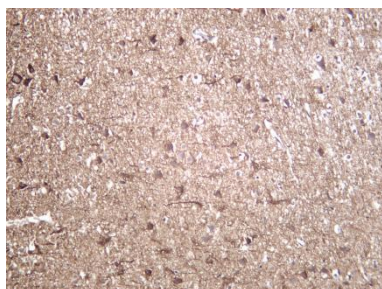
Lane 2: SH-SY5Y

Predicted band size: 111kDa

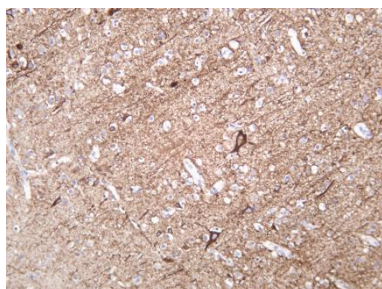
Observed band size: 180kDa



Mouse brain was stained with Anti-Neurofilament heavy polypeptide rabbit antibody



Rat brain was stained with Anti-Neurofilament heavy polypeptide rabbit antibody



Human brain was stained with Anti-Neurofilament heavy polypeptide rabbit antibody