

## LAMP2 Rabbit mAb (AR1089)

### Key Features

Host Species:	Rabbit
Reactivity:	Human, Mouse
Applications:	WB, IHC, IF, ELISA
Isotype:	IgG, Kappa
MW:	45kD (Calculated) 120kD (Observed)

### Recommended Dilution Ratios

IHC	1:200-1000
WB:	1:1000-5000
IF:	1:200-1000
ELISA:	1:5000-20000

**Storage** -15°C to -25°C/1 year (Do not lower than -25°C)

### Basic Information

Clonality Monoclonal

### Immunogen Information

Specificity Endogenous

### Target Information

Gene name LAMP2  
 Protein Name Lysosome-associated membrane glycoprotein 2

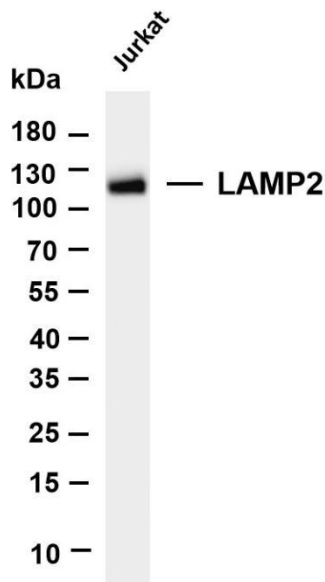
Organism	Gene ID	UniProt ID
Human	3920	P13473
Mouse		P17047

Cellular Localization Membranous

Tissue specificity Isoform LAMP-2A is highly expressed in placenta, lung and liver, less in kidney and pancreas, low in brain and skeletal muscle (PubMed:7488019, PubMed:26856698). Isoform LAMP-2B is detected in spleen, thymus, prostate, testis, small intestine, colon,

skeletal muscle, brain, placenta, lung, kidney, ovary and pancreas and liver (PubMed:7488019, PubMed:26856698). Isoform LAMP-2C is detected in small intestine, colon, heart, brain, skeletal muscle, and at lower levels in kidney and placenta (PubMed:26856698).

## Validation Data

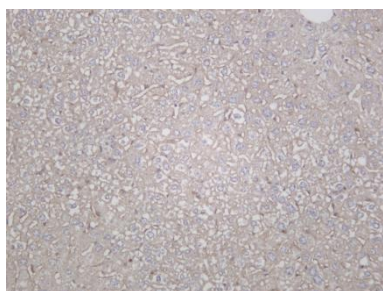


Various whole cell lysates were separated by 4-20% SDS-PAGE, and the membrane was blotted with anti-LAMP2 antibody. The HRP conjugated Goat anti-Rabbit IgG(H + L) antibody was used to detect the antibody.

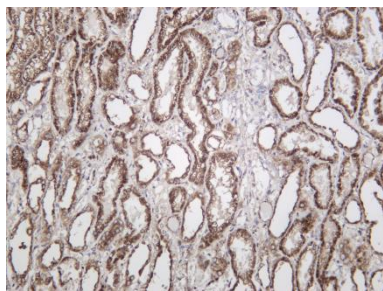
Lane 1: Jurkat

Predicted band size: 45kDa

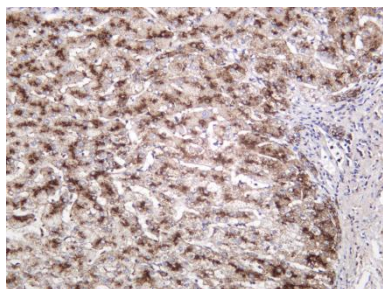
Observed band size: 120kDa



Mouse liver was stained with Anti-LAMP2 rabbit antibody



Human kidney was stained with Anti-LAMP2 rabbit antibody



Human liver was stained with Anti-LAMP2 rabbit antibody

For Research Use Only