

## PTEN Rabbit mAb (AR1085)

### Key Features

Host Species:	Rabbit
Reactivity:	Human, Mouse, Rat
Applications:	WB, IHC, IF, ELISA
Isotype:	IgG, Kappa
MW:	47kD (Calculated) 56kD (Observed)

### Recommended Dilution Ratios

WB:	1:1000-5000
IF:	1:200-1000
ELISA:	1:5000-20000
IHC:	1:200-1000

### Storage

-15°C to -25°C/1 year (Do not lower than -25°C)

### Basic Information

Clonality	Monoclonal
-----------	------------

### Immunogen Information

Specificity	Endogenous
-------------	------------

### Target Information

Gene name	PTEN MMAC1 TEP1
-----------	-----------------

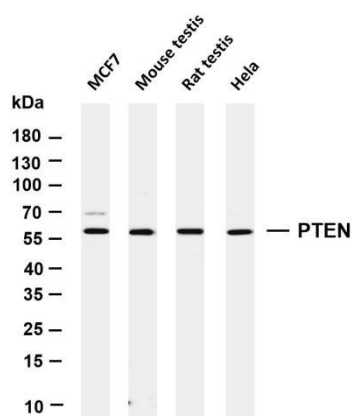
Protein Name	Phosphatidylinositol 3,4,5-trisphosphate 3-phosphatase and dual-specificity protein phosphatase PTEN (Mutated in multiple advanced cancers 1) (Phosphatase and tensin homolog)
--------------	--

Organism	Gene ID	UniProt ID
Human	5728	P60484
Mouse	19211	O08586

Cellular Localization	Cytoplasm, Nuclear
-----------------------	--------------------

Tissue specificity	Expressed at a relatively high level in all adult tissues, including heart, brain, placenta, lung, liver, muscle, kidney and pancreas.
--------------------	--

## Validation Data



Various whole cell lysates were separated by 4-20% SDS-PAGE, and the membrane was blotted with anti-PTEN antibody. The HRP conjugated Goat anti-Rabbit IgG(H + L) antibody was used to detect the antibody.

Lane 1: MCF7

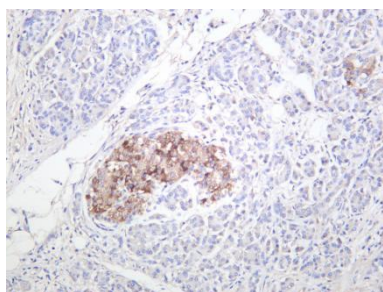
Lane 2: Mouse testis

Lane 3: Rat testis

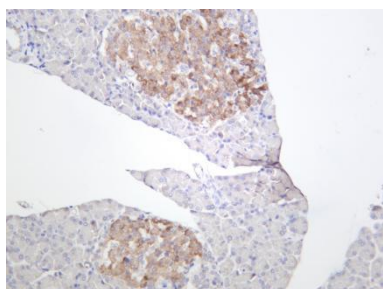
Lane 4: HeLa

Predicted band size: 47kDa

Observed band size: 56kDa



Human pancreas was stained with anti-PTEN rabbit antibody



Rat pancreas was stained with anti-PTEN rabbit antibody

For Research Use Only