

## AREB6 Rabbit mAb (AR1084)

### Key Features

Host Species:	Rabbit
Reactivity:	Human,Rat
Applications:	WB,IHC,IF,ELISA
Isotype:	IgG,Kappa
MW:	124kD (Calculated) 200kD (Observed)

### Recommended Dilution Ratios

IHC:	1:200-500
WB:	1:1000-5000
IF:	1:200-1000
ELISA:	1:5000-20000

### Storage

-15°C to -25°C/1 year (Do not lower than -25°C)

### Basic Information

Clonality	Monoclonal
-----------	------------

### Immunogen Information

Specificity	Endogenous
-------------	------------

### Target Information

Gene name	ZEB1 AREB6 TCF8
Protein Name	Zinc finger E-box-binding homeobox 1 (NIL-2-A zinc finger protein) (Negative regulator of IL2) (Transcription factor 8) (TCF-8)

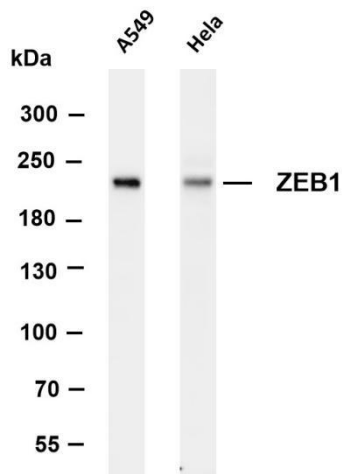
Organism	Gene ID	UniProt ID
Human	6935	P37275
Mouse		Q64318
Rat		Q62947

Cellular Localization	Nucleus
-----------------------	---------

Tissue specificity	Colocalizes with SMARCA4/BRG1 in E-cadherin-negative cells from established lines, and stroma of normal colon as well as in de-
--------------------	---

differentiated epithelial cells at the invasion front of colorectal carcinomas (at protein level). Expressed in heart and skeletal muscle, but not in liver, spleen, or pancreas.

## Validation Data



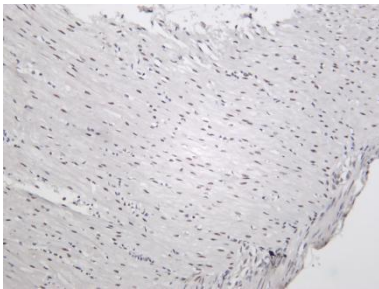
Various whole cell lysates were separated by 4-8% SDS-PAGE, and the membrane was blotted with anti-ZEB1 antibody. The HRP conjugated Goat anti-Rabbit IgG(H + L) antibody was used to detect the antibody.

Lane 1: A459

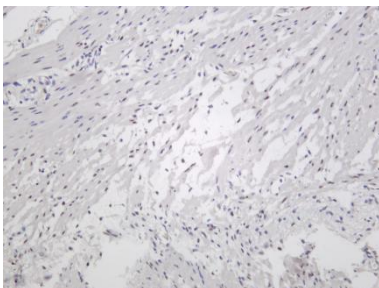
Lane 2: Hela

Predicted band size: 124kDa

Observed band size: 200kDa



Rat colon was stained with Anti-ZEB1 rabbit antibody



Human colon was stained with Anti-ZEB1 rabbit antibody

For Research Use Only