

Notch1 Rabbit mAb (AR1081)

Key Features

Host Species:	Rabbit
Reactivity:	Human,Mouse,Rat
Applications:	WB,IHC,IF,ELISA
Isotype:	IgG,Kappa
MW:	273kD (Calculated) 120kD (Observed)

Recommended Dilution Ratios

IHC:	1:200-1000
WB:	1:1000-5000
IF:	1:200-1000
ELISA:	1:5000-20000

Storage

-15°C to -25°C/1 year (Do not lower than -25°C)

Basic Information

Clonality	Monoclonal
-----------	------------

Immunogen Information

Specificity	Endogenous
-------------	------------

Target Information

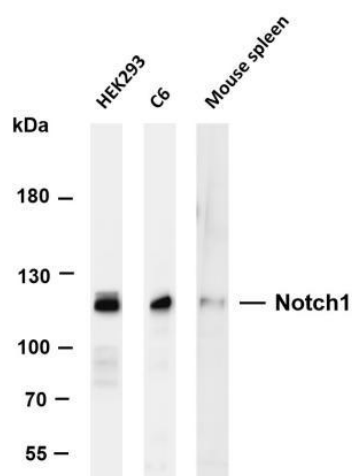
Gene name	NOTCH1
Protein Name	Neurogenic locus notch homolog protein 1

	Organism	Gene ID	UniProt ID
	Human	4851	P46531
	Mouse	18128	Q01705
	Rat		Q07008

Cellular Localization	Membranous
-----------------------	------------

Tissue specificity	In fetal tissues most abundant in spleen, brain stem and lung. Also present in most adult tissues where it is found mainly in lymphoid tissues.
--------------------	-------------------------------------------------------------------------------------------------------------------------------------------------

Validation Data



Various whole cell lysates were separated by 6% SDS-PAGE, and the membrane was blotted with anti-Notch1 antibody. The HRP conjugated Goat anti-Rabbit IgG(H + L) antibody was used to detect the antibody.

Lane 1: HEK293

Lane 2: C6

Lane 3: Mouse spleen

Predicted band size: 273kDa

Observed band size: 120kDa

For Research Use Only