

FOXO1A Rabbit mAb (AR1078)

Key Features

Host Species:	Rabbit
Reactivity:	Human, Mouse
Applications:	WB, IHC, IF, ELISA
Isotype:	IgG, Kappa
MW:	70kD (Calculated) 75kD (Observed)

Recommended Dilution Ratios

IHC:	1:400-1000
WB:	1:1000-5000
IF:	1:200-1000
ELISA:	1:5000-20000

Storage

-15°C to -25°C/1 year (Do not lower than -25°C)

Basic Information

Clonality	Monoclonal
-----------	------------

Immunogen Information

Specificity	Endogenous
-------------	------------

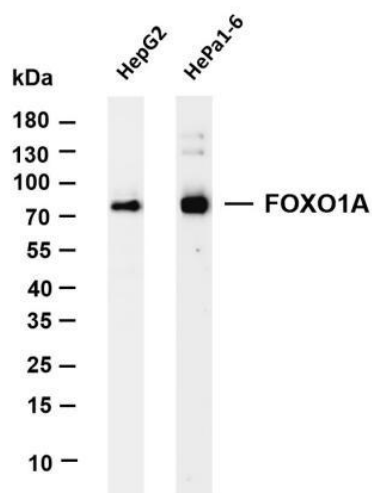
Target Information

Gene name	FOXO1
Protein Name	Forkhead box protein O1

Organism	Gene ID	UniProt ID
Human	2308	Q12778;
Mouse	56458	Q9R1E0
Rat	84482	G3V7R4

Cellular Localization	Nucleus
Tissue specificity	Ubiquitous.

Validation Data



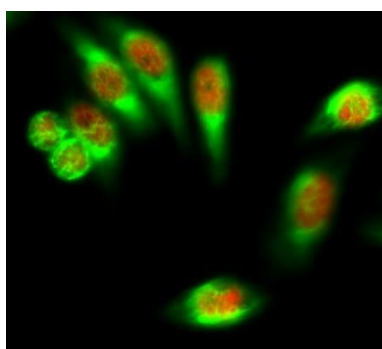
Various whole cell lysates were separated by 4-20% SDS-PAGE, and the membrane was blotted with anti-FOXO1A antibody. The HRP conjugated Goat anti-Rabbit IgG(H + L) antibody was used to detect the antibody.

Lane 1: HepG2

Lane 2: HePa1-6

Predicted band size: 70kDa

Observed band size: 75kDa



Immunofluorescence analysis of Hela cell.

1. FoxO1 Antibody(red) was diluted at 1:200(4 ° overnight). CK7 Monoclonal Antibody(12D7)(green) was diluted at 1:200(4 ° overnight).
2. Goat Anti Rabbit Alexa Fluor 594 was diluted at 1:1000(room temperature, 50min). Goat Anti Mouse Alexa Fluor 488 was diluted at 1:1000(room temperature, 50min).

For Research Use Only