

Ki67 Rabbit mAb (AR1066)

Key Features

Host Species:	Rabbit
Reactivity:	Human, Mouse, Rat
Applications:	WB, IHC, IF, ELISA
Isotype:	IgG, Kappa
MW:	359kD (Calculated) 359kD (Observed)

Recommended Dilution Ratios

IHC:	1:200-1000
WB:	1:1000-5000
IF:	1:200-1000
ELISA:	1:5000-20000

Storage

-15°C to -25°C/1 year (Do not lower than -25°C)

Basic Information

Clonality	Monoclonal
-----------	------------

Immunogen Information

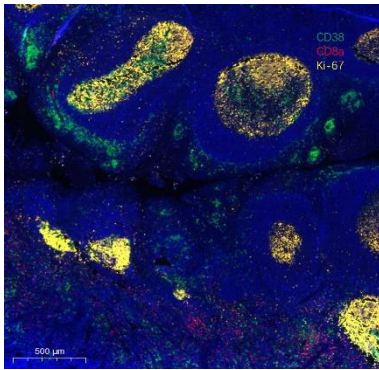
Specificity	Endogenous
-------------	------------

Target Information

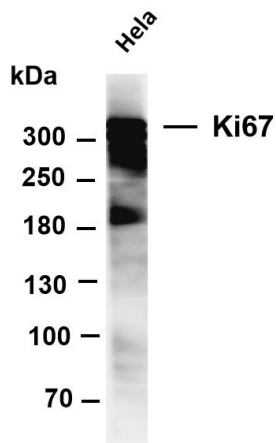
Gene name	MKI67
Protein Name	Ki 67

	Organism	Gene ID	UniProt ID
	Human	4288	P46013
Cellular Localization	Nucleus		
Tissue specificity	Nuclear		

Validation Data



Fluorescence multiplex immunohistochemical analysis of human tonsil tissue (formalin-fixed paraffin-embedded section). The immunostaining was performed by Sextuple-Fluorescence kit. CD8 α rabbit mAb(RED) and CD38 mouse mAb(GREEN) and Ki67 rabbit mAb(YELLOW) was tested with different TSA Fluorescence reagent. Microscopy and pseudocoloring of individual dyes was performed using a Slideviewer Imaging System (Excilone).

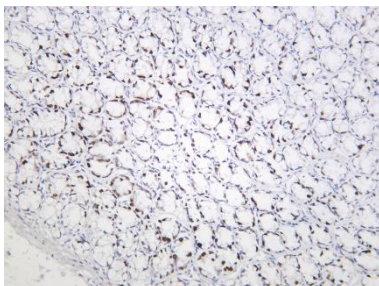


Various whole cell lysates were separated by 4-8% SDS-PAGE, and the membrane was blotted with anti-Ki67 antibody. The HRP-conjugated Goat anti-Rabbit IgG (H + L) antibody was used to detect the antibody.

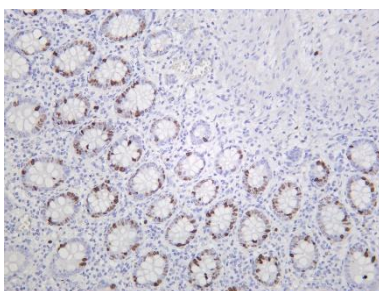
Lane 1: HeLa

Predicted band size: 359kDa

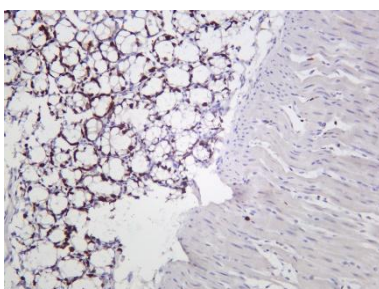
Observed band size: 359kDa



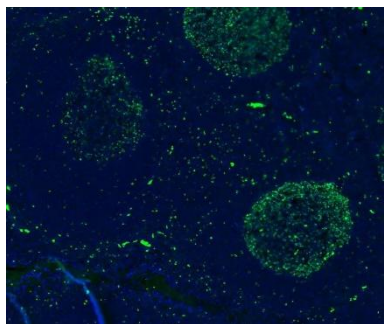
Rat colon was stained with Anti-Ki67 rabbit antibody



Human appendix was stained with Anti-Ki67 rabbit antibody



Mouse colon was stained with Anti-Ki67 rabbit antibody



Human tonsil tissue was stained with Anti-Ki67 antibody (green)

For Research Use Only