

# GSK3 $\beta$ (Phospho Ser9) Rabbit mAb (AR1054)

## Key Features

Host Species:	Rabbit
Reactivity:	Human, Mouse
Applications:	WB, IHC, IF, ELISA
Isotype:	IgG, Kappa
MW:	47kD (Calculated) 47kD (Observed)

## Recommended Dilution Ratios

IHC:	1:200-1000
WB:	1:1000-5000
IF:	1:200-1000
ELISA:	1:5000-20000

## Storage

-15°C to -25°C/1 year (Do not lower than -25°C)

## Basic Information

Clonality	Monoclonal
-----------	------------

## Immunogen Information

Specificity	This antibody detects endogenous levels of GSK3 $\beta$ only when phosphorylated at Ser9. This antibody does not recognize phosphorylated at other sites.
-------------	---

## Target Information

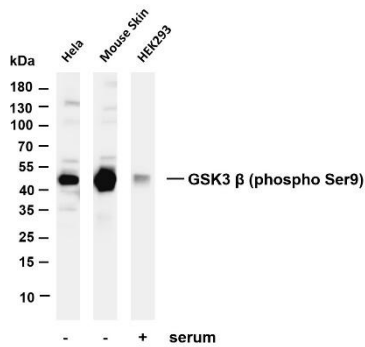
Gene name	GSK3B
Protein Name	Glycogen synthase kinase-3 beta

Organism	Gene ID	UniProt ID
Human	2932	P49841
Mouse	56637	Q9WV60
Rat	84027	P18266

Cellular Localization	Cytoplasmic, Membranous
Tissue specificity	Expressed in testis, thymus, prostate and ovary and weakly expressed in lung, brain and kidney. Colocalizes with EIF2AK2/PKR

and TAU in the Alzheimer disease (AD) brain.

## Validation Data



Various whole cell lysates were separated by 4-20% SDS-PAGE, and the membrane was blotted with anti-GSK3 β (phospho Ser9) antibody. The HRP-conjugated Goat anti-Rabbit IgG(H + L) antibody was used to detect the antibody.

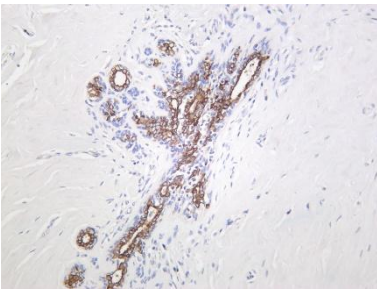
Lane 1: HeLa

Lane 2: Mouse skin

Lane 3: HEK293 treated with serum in 30 minutes

Predicted band size: 47kDa

Observed band size: 47kDa



Human breast carcinoma was stained with Anti-GSK3 β (phospho Ser9) rabbit antibody.

For Research Use Only