

LC3 A/B Rabbit pAb (AR20087)

Key Features

Host Species:	Rabbit
Reactivity:	Human, Mouse, Rat
Applications:	WB, IHC, ELISA
Isotype:	IgG
MW:	14,16kD (Observed)

Recommended Dilution Ratios

WB:	1:500-2000
IHC:	1:50-300
ELISA:	1:2000-20000
Storage	-15°C to -25°C/1 year (Do not lower than -25°C)

Basic Information

Clonality	Polyclonal
-----------	------------

Immunogen Information

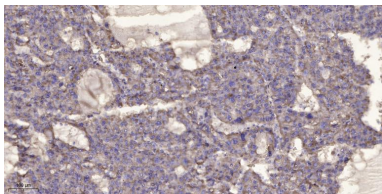
Specificity	This antibody detects endogenous levels of Human, Mouse, Rat LC3 A/B
-------------	--

Target Information

Gene name	LC3 A/B
Protein Name	LC3 A/B

	Organism	Gene ID	UniProt ID
	Human		Q9H492; Q9GZQ8
Cellular Localization	Cytoplasmic vesicle, autophagosome membrane ; Lipid-anchor . Endomembrane system ; Lipid-anchor . Cytoplasm, cytoskeleton . LC3-II binds to the autophagic membranes.		
Tissue specificity	Most abundant in heart, brain, liver, skeletal muscle and testis but absent in thymus and peripheral blood leukocytes.		

Validation Data



Immunohistochemical analysis of paraffin-embedded human liver cancer. 1, Antibody was diluted at 1:200(4° overnight). 2, Tris-EDTA,pH9.0 was used for antigen retrieval. 3,Secondary antibody was diluted at 1:200(room temperature, 45min).

For Research Use Only