

AQP4 Rabbit mAb (AR1973)

Key Features

Host Species:	Rabbit
Reactivity:	Human,Mouse,Rat
Applications:	WB,IHC,IF,IP,ELISA
Isotype:	IgG,Kappa
MW:	35 kD (Calculated) 28 kD (Observed)

Recommended Dilution Ratios

IHC:	1:200-1000
WB:	1:2000-10000
IF:	1:200-1000
IP:	1:50-200
ELISA:	1:5000-20000

Storage

-15°C to -25°C/1 year (Do not lower than -25°C)

Basic Information

Clonality	Monoclonal
-----------	------------

Immunogen Information

Specificity	Endogenous
-------------	------------

Target Information

Gene name	AQP4
Protein Name	Aquaporin-4

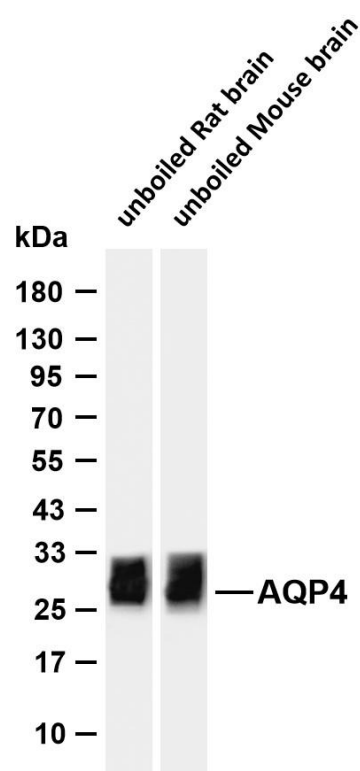
Organism	Gene ID	UniProt ID
Human	361	P55087
Mouse	11829	P55088
Rat	25293	P47863

Cellular Localization	Cell membrane ; Multi-pass membrane protein . Basolateral cell membrane ; Multi-pass membrane protein . Endosome membrane . Cell membrane, sarcolemma ; Multi-pass membrane protein . Cell
-----------------------	--

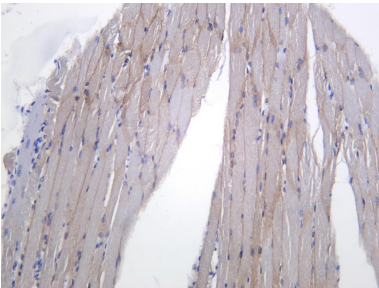
projection . Activation of the vasopressin receptor AVPR1A triggers AQP4 phosphorylation at Ser-180 and promotes its internalization from the cell membrane. Detected on brain astrocyte processes and astrocyte endfeet close to capillaries
 Detected in skeletal muscle (PubMed:29055082). Detected in stomach, along the glandular base region of the fundic gland (at protein level) (PubMed:8601457). Detected in brain, lung and skeletal muscle, and at much lower levels in heart and ovary (PubMed:7559426, PubMed:8601457).

Tissue specificity

Validation Data



Various whole cell lysates were separated by 4-20% SDS-PAGE, and the membrane was blotted with anti-AQP4 antibody. The HRP conjugated Goat anti-Rabbit IgG (H + L) antibody was used to detect the antibody. Lane 1: unboiled Rat brain Lane 2: unboiled Mouse brain Predicted band size: 35kDa Observed band size: 28kDa



Human skeletal muscle was stained with anti-AQP4 Rabbit antibody

For Research Use Only