

IL18 Rabbit mAb (AR1017)

Key Features

Host Species:	Rabbit
Reactivity:	Human
Applications:	WB,IHC,IF,ELISA
Isotype:	IgG,Kappa
MW:	22kD (Calculated) 22kD (Observed)

Recommended Dilution Ratios

IHC:	1:200-1000
WB:	1:1000-5000
IF:	1:200-1000
ELISA:	1:5000-20000

Storage

-15°C to -25°C/1 year (Do not lower than -25°C)

Basic Information

Clonality	Monoclonal
-----------	------------

Immunogen Information

Specificity	Endogenous
-------------	------------

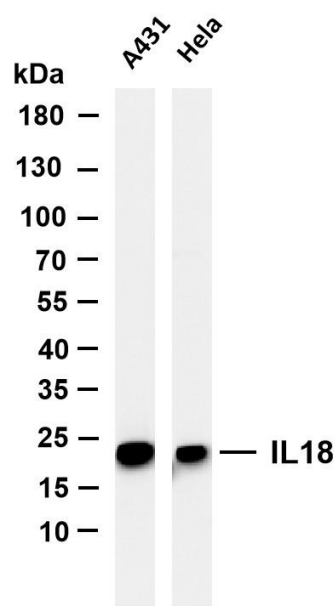
Target Information

Gene name	IL18 IGIF IL1F4
Protein Name	Interleukin-18 (IL-18) (Iboctadekin) (Interferon gamma-inducing factor) (IFN-gamma inducing factor) (Interleukin-1 gamma) (IL-1 gamma)

	Organism	Gene ID	UniProt ID
	Human	3606	Q14116
	Mouse		P70380
	Rat		P97636

Cellular Localization	Cytoplasm
Tissue specificity	Liver, Peripheral blood, Urinary bladder

Validation Data



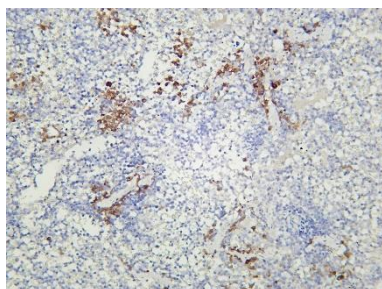
Various whole cell lysates were separated by 4-20% SDS-PAGE, and the membrane was blotted with anti-IL18 antibody. The HRP conjugated Goat anti-Rabbit IgG(H + L) antibody was used to detect the antibody.

Lane 1: A431

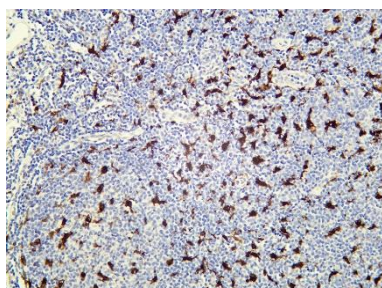
Lane 2: HeLa

Predicted band size: 22kDa

Observed band size: 22kDa



Mouse spleen was stained with Anti-IL18 rabbit antibody



Human tonsil was stained with Anti-IL18 rabbit antibody

For Research Use Only