

MMP-1 Rabbit mAb (AR1609)

Key Features

Host Species:	Rabbit
Reactivity:	Human
Applications:	WB,IHC,IF,IP,ELISA
Isotype:	IgG,Kappa
MW:	54kDa (Calculated) 54kDa (Observed)

Recommended Dilution Ratios

IHC:	1:200-1000
WB:	1:2000-10000
IF:	1:200-1000
ELISA:	1:5000-20000
IP:	1:50-200

Storage

-15°C to -25°C/1 year (Do not lower than -25°C)

Basic Information

Clonality	Monoclonal
-----------	------------

Immunogen Information

Specificity	Endogenous
-------------	------------

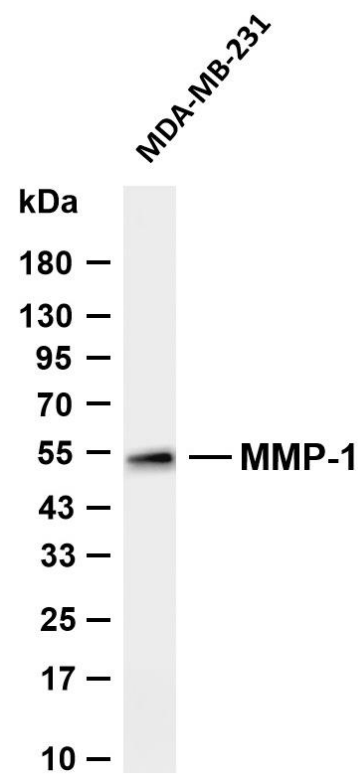
Target Information

Gene name	MMP1
Protein Name	Interstitial collagenase

Organism	Gene ID	UniProt ID
Human	4312	P03956

Cellular Localization	Secreted, extracellular space, extracellular matrix.
Tissue specificity	Fibroblast, Ovary, Synovial cell, Synovial membrane, Thyroid.

Validation Data



Various whole cell lysates were separated by 4-20% SDS-PAGE, and the membrane was blotted with anti-MMP-1 antibody. The HRP-conjugated Goat anti-Rabbit IgG (H + L) antibody was used to detect the antibody.

Lane 1: MDA-MB-231

Predicted band size: 54kDa

Observed band size: 54kDa

For Research Use Only