

## GPX4 Rabbit mAb (AR1466)

### Key Features

Host Species:	Rabbit
Reactivity:	Human, Mouse, Rat
Applications:	WB, IHC, IF, ELISA
Isotype:	IgG, Kappa
MW:	22kD (Calculated) 22kD (Observed)

### Recommended Dilution Ratios

WB:	1:2000-10000
IHC:	1: 200-1000
IF:	1:200-1000
ELISA:	1:5000-20000

### Storage

-15°C to -25°C/1 year (Do not lower than -25°C)

### Basic Information

Clonality	Monoclonal
-----------	------------

### Immunogen Information

Specificity	Endogenous
-------------	------------

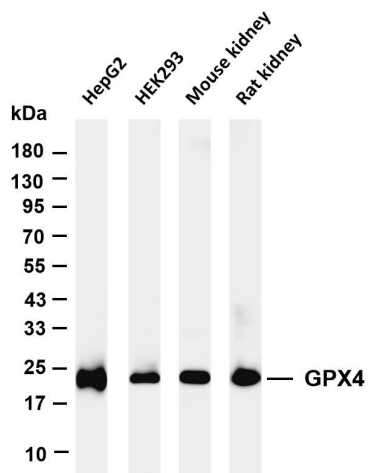
### Target Information

Gene name	GPX4
Protein Name	GPX4

Organism	Gene ID	UniProt ID
Human	2879	P36969

Cellular Localization	Cytoplasm
Tissue specificity	Present primarily in testis. Expressed in platelets (at protein level) (PubMed:11115402).

## Validation Data



Various whole cell lysates were separated by 4-20% SDS-PAGE, and the membrane was blotted with anti-Glutathione Peroxidase 4 antibody. The HRP-conjugated Goat anti-Rabbit IgG(H + L) antibody was used to detect the antibody.

Lane 1: HepG2

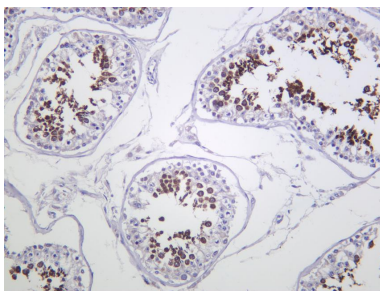
Lane 2: HEK293

Lane 3: Mouse kidney

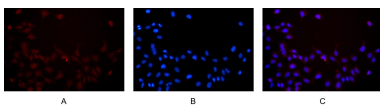
Lane 4: Rat kidney

Predicted band size: 22kDa

Observed band size: 22kDa



Human testis was stained with anti-GPX4 Rabbit antibody



Immunofluorescence analysis of HEK293. Picture A: Glutathione Peroxidase 4 antibody (red). Picture B: DAPI (blue). Picture C: Merge of A+B

For Research Use Only