

Lactate Dehydrogenase Isoenzyme V

Rabbit mAb (AR1011)

Key Features

Host Species:	Rabbit
Reactivity:	Human,Mouse,Rat
Applications:	WB,IHC,IF,ELISA
Isotype:	IgG,Kappa
MW:	36kD (Calculated) 36kD (Observed)

Recommended Dilution Ratios

IHC:	1:200-1000
WB:	1:500-2000
IF:	1:200-1000
ELISA:	1:5000-20000

Storage

-15°C to -25°C/1 year (Do not lower than -25°C)

Basic Information

Clonality	Monoclonal
-----------	------------

Immunogen Information

Specificity	Endogenous
-------------	------------

Target Information

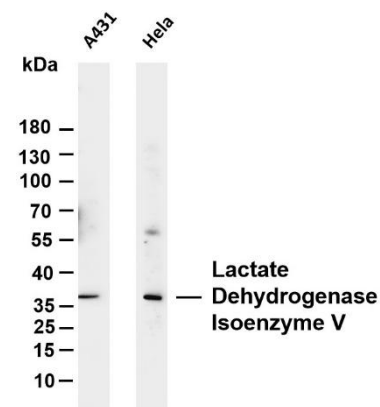
Gene name	LDHA PIG19
Protein Name	L-lactate dehydrogenase A chain (LDH-A) (Cell proliferation-inducing gene 19 protein) (LDH muscle subunit) (LDH-M) (Renal carcinoma antigen NY-REN-59)

Organism	Gene ID	UniProt ID
Human	3939	P00338
Mouse		P06151
Rat		P04642

Cellular Localization	Cytoplasm
-----------------------	-----------

Tissue specificity

Validation Data



Predominantly expressed in anaerobic tissues such as skeletal muscle and liver.

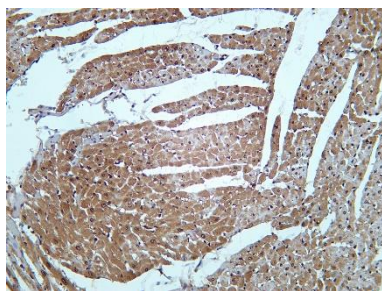
Various whole cell lysates were separated by 4-20% SDS-PAGE, and the membrane was blotted with anti-Lactate Dehydrogenase Isoenzyme V antibody. The HRP-conjugated Goat anti-Rabbit IgG(H + L) antibody was used to detect the antibody.

Lane 1: A431

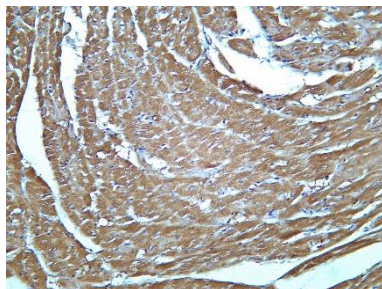
Lane 2: HeLa

Predicted band size: 36kDa

Observed band size: 36kDa



Rat heart was stained with Anti-Lactate Dehydrogenase Isoenzyme V rabbit antibody



Mouse heart was stained with Anti-Lactate Dehydrogenase Isoenzyme V rabbit antibody

For Research Use Only