

Cleaved PARP1 Rabbit mAb (AR1002)

Key Features

Host Species:	Rabbit
Reactivity:	Human,Mouse,Rat
Applications:	WB,IHC,IF,ELISA
Isotype:	IgG,Kappa
MW:	25kD (Calculated) 25kD (Observed)

Recommended Dilution Ratios

IHC:	1:200-1000
WB:	1:500-5000
IF:	1:200-1000
ELISA:	1:5000-20000

Storage

-15°C to -25°C/1 year (Do not lower than -25°C)

Basic Information

Clonality	Monoclonal
-----------	------------

Immunogen Information

Specificity	This antibody detects endogenous levels of Cleaved PARP1.
-------------	---

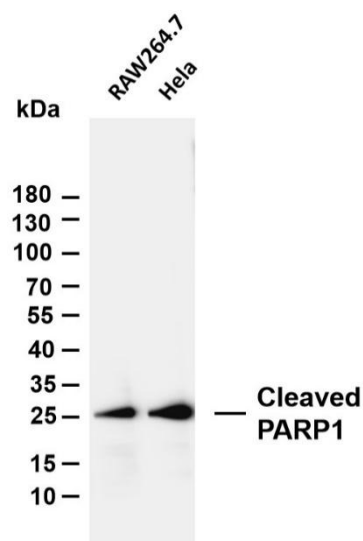
Target Information

Gene name	PARP1
Protein Name	Poly [ADP-ribose] polymerase 1

Organism	Gene ID	UniProt ID
Human	142	P09874
Mouse		P11103

Cellular Localization	Cytoplasmic, Nuclear
Tissue specificity	Brain, Colon carcinoma, Fibroblast, Lung, Ovarian carcinoma, Skin

Validation Data



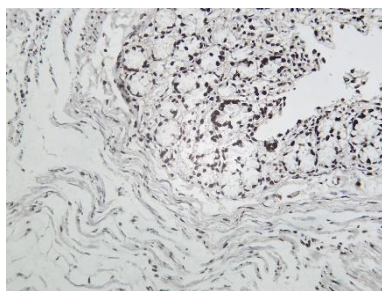
Various whole cell lysates were separated by 4-20% SDS-PAGE, and the membrane was blotted with anti-Cleaved PARP1 antibody. The HRP-conjugated Goat anti-Rabbit IgG(H + L) antibody was used to detect the antibody.

Lane 1: RAW264.7

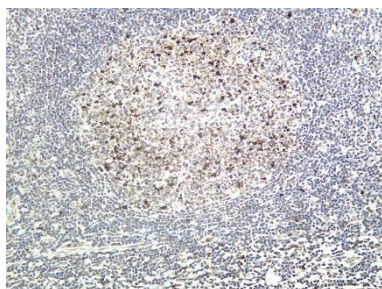
Lane 2: HeLa

Predicted band size: 25kDa

Observed band size: 25kDa



Rat colon tissue was stained with Anti-Cleaved PARP1 rabbit Antibody



Human tonsil tissue was stained with Anti-Cleaved PARP1 rabbit Antibody

For Research Use Only