

MMP7 Rabbit mAb (AR1289)

Key Features

Host Species:	Rabbit
Reactivity:	Human
Applications:	WB,IHC,IF,ELISA
Isotype:	IgG,Kappa
MW:	30kD (Calculated) 30kD (Observed)

Recommended Dilution Ratios

IHC:	1:200-1000
WB:	1:2000-10000
IF:	1:200-1000
ELISA:	1:5000-20000

Storage

-15°C to -25°C/1 year (Do not lower than -25°C)

Basic Information

Clonality	Monoclonal
-----------	------------

Immunogen Information

Specificity	Endogenous
-------------	------------

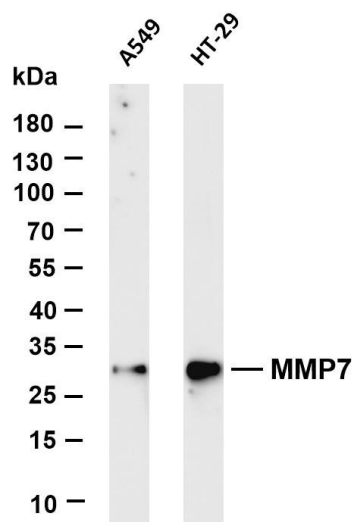
Target Information

Gene name	MMP7 MP SL1 PUMP1
Protein Name	Matrilysin

Organism	Gene ID	UniProt ID
Human	4316	P09237
Mouse		Q10738
Rat	25335	P50280

Cellular Localization	Secreted
Tissue specificity	Colon, Human small intestine, Kidney, Placenta

Validation Data



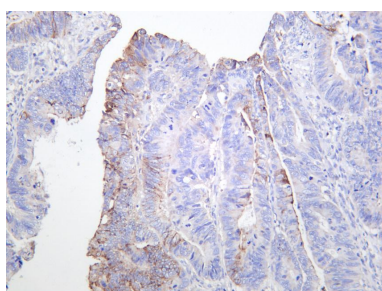
Various whole cell lysates were separated by 4-20% SDS-PAGE, and the membrane was blotted with anti-MMP7 antibody. The HRP-conjugated Goat anti-Rabbit IgG(H + L) antibody was used to detect the antibody.

Lane 1: A549

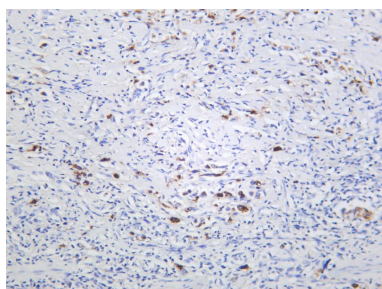
Lane 2: HT-29

Predicted band size: 30kDa

Observed band size: 30kDa



Human colon carcinoma was stained with anti-MMP7 rabbit antibody



Human gastric carcinoma was stained with anti-MMP7 rabbit antibody

For Research Use Only