

N Cadherin Rabbit mAb (AR1158)

Key Features

Host Species:	Rabbit
Reactivity:	Human, Mouse, Rat
Applications:	WB, IHC, IF, ELISA
Isotype:	IgG, Kappa
MW:	100kD (Calculated) 130kD (Observed)

Recommended Dilution Ratios

IHC:	1:500-2000
WB:	1:1000-5000
IF:	1:200-1000
ELISA:	1:5000-20000

Storage

-15°C to -25°C/1 year (Do not lower than -25°C)

Basic Information

Clonality	Monoclonal
-----------	------------

Immunogen Information

Specificity	Endogenous
-------------	------------

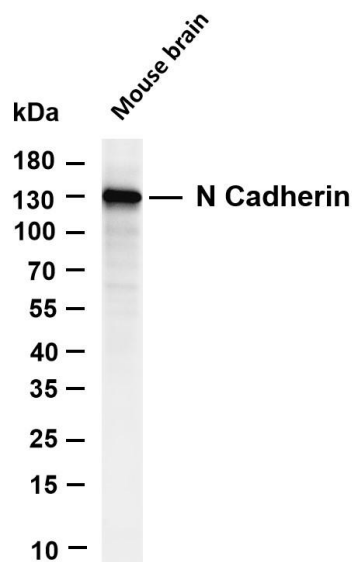
Target Information

Gene name	CDH2 CDHN NCAD
Protein Name	Cadherin-2 (CDw325) (Neural cadherin) (N-cadherin) (CD antigen CD325)

Organism	Gene ID	UniProt ID
Human	1000	P19022
Mouse	12558	P15116
Rat	83501	Q9Z1Y3

Cellular Localization	Membrane
Tissue specificity	Brain, Epithelium, Liver

Validation Data

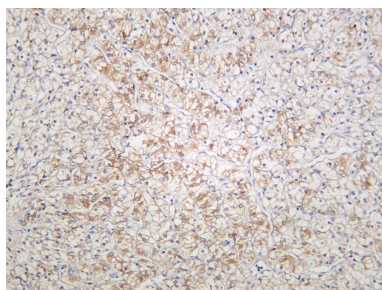


Various whole cell lysates were separated by 4-20% SDS-PAGE, and the membrane was blotted with anti-N Cadherin antibody. The HRP-conjugated Goat anti-Rabbit IgG(H + L) antibody was used to detect the antibody.

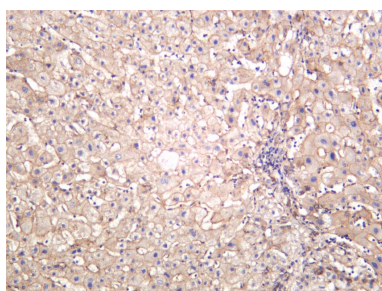
Lane 1: Mouse brain

Predicted band size: 100kDa

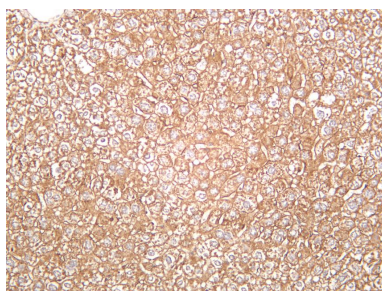
Observed band size: 130kDa



Human kidney carcinoma was stained with anti-N Cadherin rabbit antibody



Human liver was stained with anti-N Cadherin rabbit antibody



Mouse liver was stained with anti-N Cadherin rabbit antibody



Rat liver was stained with anti-N Cadherin rabbit antibody

For Research Use Only