

E-cadherin Rabbit pAb (AR20057)

Key Features

Host Species:	Rabbit
Reactivity:	Human,Mouse,Rat
Applications:	WB,IHC,IF,ELISA
Isotype:	IgG
MW:	97kD (Calculated) 95-140kD (Observed)

Recommended Dilution Ratios

WB:	1:500-2000
IHC:	1:100-300
ELISA:	1: 20000
IF:	1:100-300
Storage	-15°C to -25°C/1 year (Do not lower than -25°C)

Basic Information

Clonality	Polyclonal
-----------	------------

Immunogen Information

Specificity	E-cadherin Polyclonal Antibody detects endogenous levels of E-cadherin protein.
-------------	---

Target Information

Gene name	CDH1
Protein Name	Cadherin-1

Organism	Gene ID	UniProt ID
Human	999	P12830
Mouse	12550	P09803

Rat

Q9R0T4; Q9Z1Y3;
Q63149

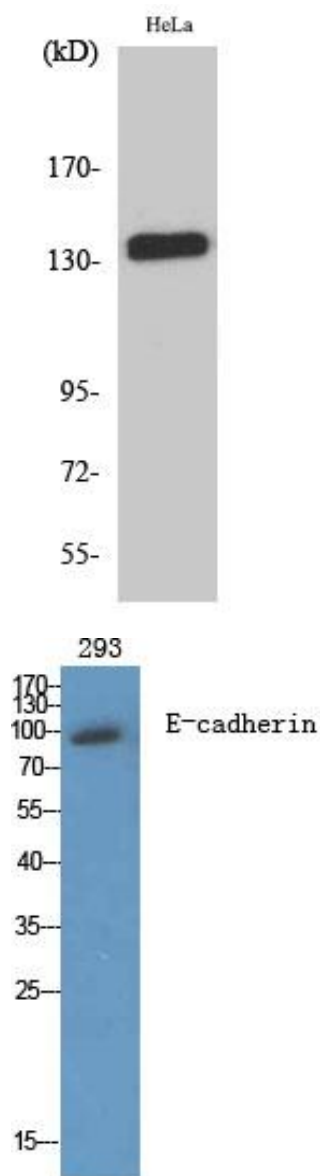
Cellular Localization

Cell junction, adherens junction. Cell membrane; Single-pass type I membrane protein. Endosome. Golgi apparatus, trans-Golgi network. Colocalizes with DLGAP5 at sites of cell cell contact in intestinal epithelial cells. Anchored to actin microfilaments through association with alpha-, beta- and gamma-catenin. Sequential proteolysis induced by apoptosis or calcium influx, results in translocation from sites of cell-cell contact to the cytoplasm. Colocalizes with RAB11A endosomes during its transport from the Golgi apparatus to the plasma membrane.

Tissue specificity

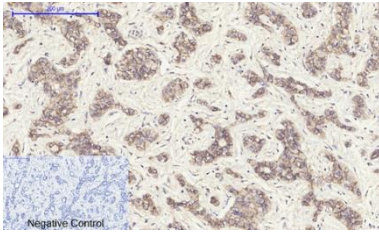
Non-neural epithelial tissues.

Validation Data



Western Blot analysis of HeLa cells using E-cadherin Polyclonal Antibody diluted at 1:2000.

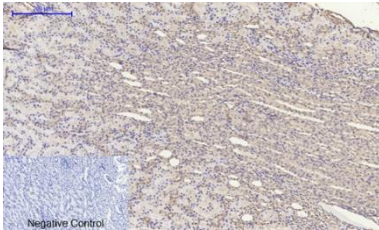
Western Blot analysis of 293 cells using E-cadherin Polyclonal Antibody diluted at 1:2000.



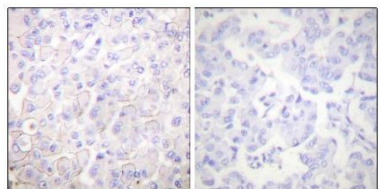
Immunohistochemical analysis of paraffin-embedded Human-liver-cancer tissue.

1. E-cadherin Polyclonal Antibody was diluted at 1:200(4°C, overnight).
2. Sodium citrate pH 6.0 was used for antibody retrieval (>98°C, 20min).
3. Secondary antibody was diluted at 1:200(room temperature, 30min). Negative control was used by secondary antibody only.

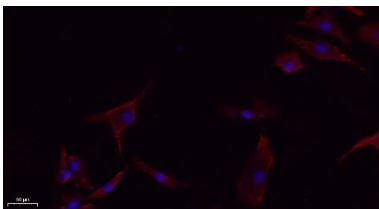
Immunohistochemical analysis of paraffin-embedded Rat-kidney tissue.



1. E cadherin Polyclonal Antibody was diluted at 1:200(4°C, overnight).
2. Sodium citrate pH 6.0 was used for antibody retrieval (>98°C, 20min).
3. Secondary antibody was diluted at 1:200(room temperature, 30min). Negative control was used by secondary antibody only.



Immunohistochemistry analysis of paraffin-embedded human breast carcinoma tissue, using Cadherin-pan Antibody. The picture on the right is blocked with the synthesized peptide.



Immunofluorescence analysis of A549.

1. Primary Antibody(red) was diluted at 1:200(4°C overnight).
2. Goat Anti Rabbit IgG (H&L) - Alexa Fluor 594 Secondary antibody was diluted at 1:1000(room temperature, 50min).
3. DAPI (blue) 10min.

Immunofluorescence analysis of rat-lung tissue.

1. E-cadherin Polyclonal Antibody(red) was diluted at 1:200 (4°C, overnight).
2. Cy3 labeled Secondary antibody was diluted at 1:300(room temperature, 50min).
3. DAPI (blue) 10min.

Picture A: Target. Picture B: DAPI. Picture C: merge of A+B

