

Nicalin Rabbit pAb (AR20049)

Key Features

Host Species:	Rabbit
Reactivity:	Human, Mouse, Rat
Applications:	WB, IHC, IF, ELISA
Isotype:	IgG
MW:	63kD (Observed)

Recommended Dilution Ratios

WB:	1:500-2000
IHC:	1:100-300
ELISA:	1:40000
IF:	1:50-200
Storage	-15°C to -25°C/1 year (Do not lower than -25°C)

Basic Information

Clonality	Polyclonal
-----------	------------

Immunogen Information

Specificity	Nicalin Polyclonal Antibody detects endogenous levels of Nicalin protein.
-------------	---

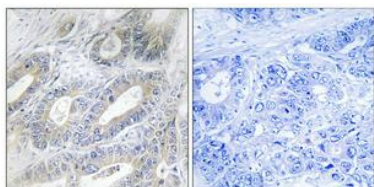
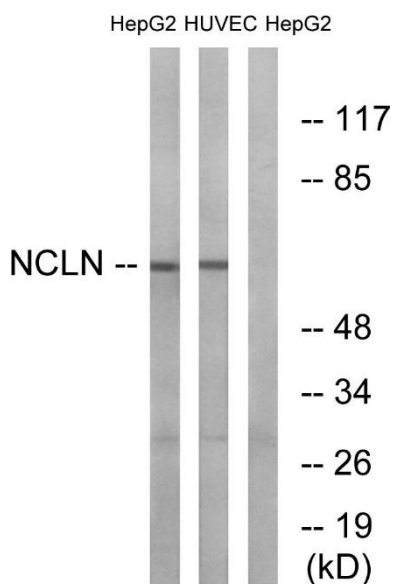
Target Information

Gene name	NCLN
Protein Name	Nicalin

Organism	Gene ID	UniProt ID
Human	56926	Q969V3
Mouse	103425	Q8VCM8
Rat	314648	Q5XIA1

Cellular Localization	Endoplasmic reticulum membrane; Single-pass membrane protein.
Tissue specificity	Highly expressed in pancreas and skeletal muscle and, at lower levels, in heart.

Validation Data



For Research Use Only