

# STAT6 (Phospho Tyr641) Rabbit mAb (AR1971)

## Key Features

Host Species:	Rabbit
Reactivity:	Human, Mouse, Rat
Applications:	WB, IHC, IF, IP, ELISA
Isotype:	IgG, Kappa
MW:	94kDa (Calculated) 110kDa (Observed)

## Recommended Dilution Ratios

IHC:	1:500-2000
WB:	1:2000-10000
IF:	1:200-1000
ELISA:	1:5000-20000
IP:	1:50-200

## Storage

-15°C to -25°C/1 year (Do not lower than -25°C)

## Basic Information

Clonality	Monoclonal
-----------	------------

## Immunogen Information

Specificity	Endogenous
-------------	------------

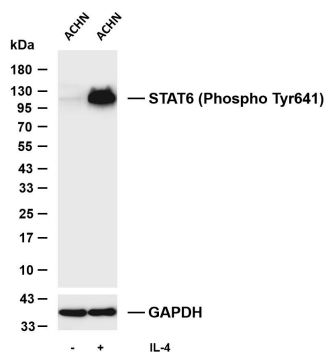
## Target Information

Gene name	STAT6
Protein Name	Signal transducer and activator of transcription 6

Organism	Gene ID	UniProt ID
Human	6778	P42226
Mouse	20852	P52633

Cellular Localization	Cytoplasm. Nucleus. Translocated into the nucleus in response to phosphorylation
Tissue specificity	Expressed in granulocyte and 201 other cell types.

## Validation Data



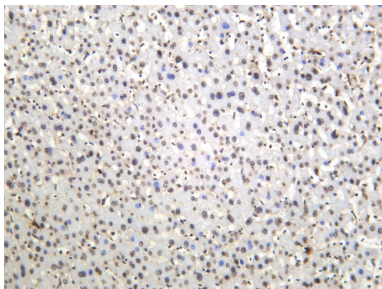
Various whole cell lysates were separated by 4-20% SDS-PAGE, and the membrane was blotted with anti-STAT6 (Phospho Tyr641) antibody. The HRP conjugated Goat anti-Rabbit IgG (H + L) antibody was used to detect the antibody.

Lane 1: ACHN

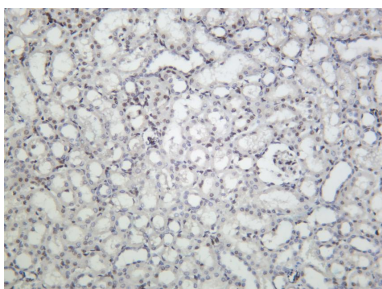
Lane 2: ACHN was treated with IL-4(100ng/ml) for 30 minutes

Predicted band size: 94kDa

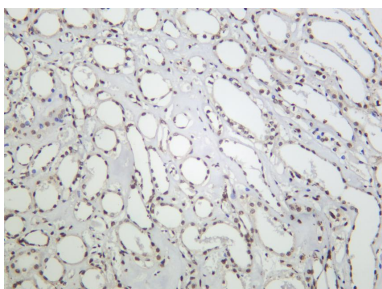
Observed band size: 110kDa



Human liver was stained with anti-STAT6 (Phospho Tyr641) Rabbit antibody.



Mouse kidney was stained with anti-STAT6 (Phospho Tyr641) Rabbit antibody.



Rat kidney was stained with anti-STAT6 (Phospho Tyr641) Rabbit antibody.

For Research Use Only