

IκB-α (Phospho Ser36) Rabbit mAb (AR1969)

Key Features

Host Species:	Rabbit
Reactivity:	Human, Mouse, Rat
Applications:	WB, IHC, IF, ELISA
Isotype:	IgG, Kappa
MW:	36kDa (Calculated) 39kDa (Observed)

Recommended Dilution Ratios

IHC:	1:500-1000
WB:	1:2000-10000
IF:	1:200-1000
ELISA:	1:5000-20000

Storage

-15°C to -25°C/1 year (Do not lower than -25°C)

Basic Information

Clonality	Monoclonal
-----------	------------

Immunogen Information

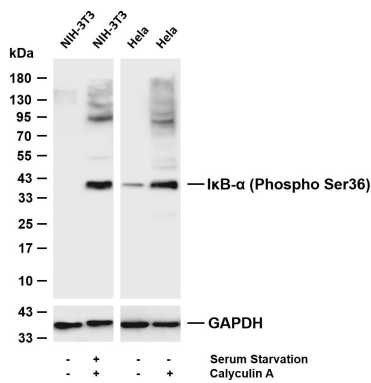
Specificity	Endogenous
-------------	------------

Target Information

Gene name	NFKBIA IKBA MAD3 NFKBI
Protein Name	NF-kappa-B inhibitor alpha

	Organism	Gene ID	UniProt ID
	Human	4792	P25963
	Mouse	18035	Q9Z1E3
	Rat	25493	Q63746
Cellular Localization	Cytoplasm. Nucleus. Shuttles between the nucleus and the cytoplasm by a nuclear localization signal (NLS) and a CRM1-dependent nuclear export.		
Tissue specificity	Brain, Kidney, Lymph node, Monocyte		

Validation Data



Various whole cell lysates were separated by 4-20% SDS-PAGE, and the membrane was blotted with anti-IκB-α (Phospho Ser36) antibody. The HRP-conjugated Goat anti-Rabbit IgG (H + L) antibody was used to detect the antibody.

Lane 1: NIH-3T3

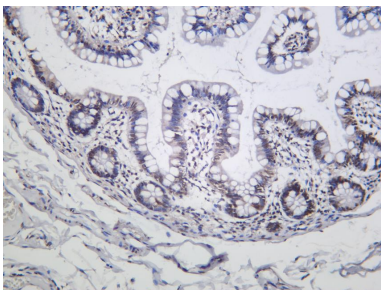
Lane 2: NIH-3T3 serum was starved overnight and treated with 20% FBS and Calyculin A (100nM) for 15 minutes

Lane 3: HeLa

Lane 4: HeLa was treated with Calyculin A(100nM) for 30 minutes

Predicted band size: 36kDa

Observed band size: 39kDa



Human colon was stained with anti-IκB-α (Phospho Ser36) Rabbit antibody.

For Research Use Only