

p300 Rabbit mAb (AR1966)

Key Features

| | |
|---------------|--|
| Host Species: | Rabbit |
| Reactivity: | Human, Mouse, Rat |
| Applications: | WB, IF, IP, ELISA |
| Isotype: | IgG, Kappa |
| MW: | 264kDa (Calculated) 300kDa (Observed) |

Recommended Dilution Ratios

| | |
|--------|--------------|
| WB: | 1:2000-10000 |
| IF: | 1:200-1000 |
| ELISA: | 1:5000-20000 |
| IP: | 1:50-200 |

Storage

-15°C to -25°C/1 year (Do not lower than -25°C)

Basic Information

| | |
|-----------|------------|
| Clonality | Monoclonal |
|-----------|------------|

Immunogen Information

| | |
|-------------|------------|
| Specificity | Endogenous |
|-------------|------------|

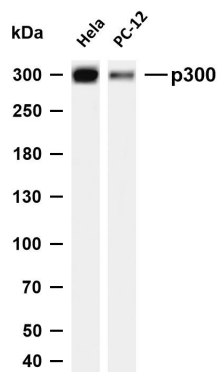
Target Information

| | |
|--------------|--------------------------------|
| Gene name | EP300 |
| Protein Name | Histone acetyltransferase p300 |

| Organism | Gene ID | UniProt ID |
|----------|---------|------------|
| Human | 2033 | Q09472 |
| Mouse | | B2RWS6 |

| | |
|-----------------------|---|
| Cellular Localization | Cytoplasm. Nucleus. Chromosome. Localizes to active chromatin: Colocalizes with histone H3 acetylated and/or crotonylated at 'Lys-18' (H3K18ac and H3K18cr, respectively) (PubMed:25818647). In the presence of ALX1 relocates from the cytoplasm to the nucleus. Colocalizes with ROCK2 in the nucleus (PubMed:12929931) |
| Tissue specificity | Epithelium, Skin |

Validation Data



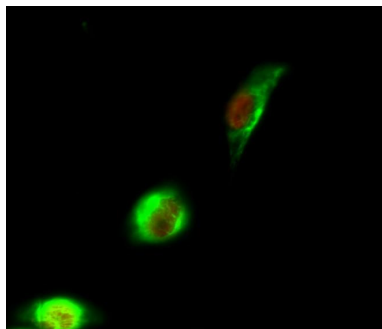
Various whole cell lysates were separated by 4-8% SDS-PAGE, and the membrane was blotted with anti-p300 antibody. The HRP conjugated Goat anti-Rabbit IgG (H + L) antibody was used to detect the antibody.

Lane 1: HeLa

Lane 2: PC-12

Predicted band size: 264kDa

Observed band size: 300kDa



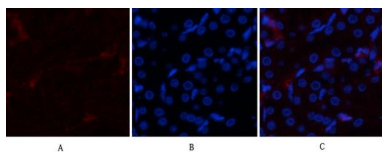
Immunofluorescence analysis of HeLa cell.

1. p300 Antibody(red) was diluted at 1:200(4 °C overnight). p53 Monoclonal Antibody (green) was diluted at 1:200(4 °C overnight).
2. Goat Anti Rabbit Alexa Fluor 594 was diluted at 1:1000(room temperature, 50min). Goat Anti Mouse Alexa Fluor 488 was diluted at 1:1000(room temperature, 50min)

Immunofluorescence analysis of rat-kidney tissue.

1. p300 Antibody(red) was diluted at 1:200(4°C, overnight).
2. Cy3 labeled Secondary antibody was diluted at 1:300(room temperature, 50min).
3. Picture B: DAPI(blue) 10min.

Picture A: Target. Picture B: DAPI. Picture C: merge of A+B



For Research Use Only