

## c-Fms Rabbit mAb (AR1965)

### Key Features

Host Species:	Rabbit
Reactivity:	Human, Mouse, Rat
Applications:	WB, IHC, IF, ELISA
Isotype:	IgG, Kappa
MW:	108kDa (Calculated) 140-200kDa (Observed)

### Recommended Dilution Ratios

IHC:	1:200-1000
WB:	1:2000-10000
IF:	1:200-1000
ELISA:	1:5000-20000

### Storage

-15°C to -25°C/1 year (Do not lower than -25°C)

### Basic Information

Clonality	Monoclonal
-----------	------------

### Immunogen Information

Specificity	Endogenous
-------------	------------

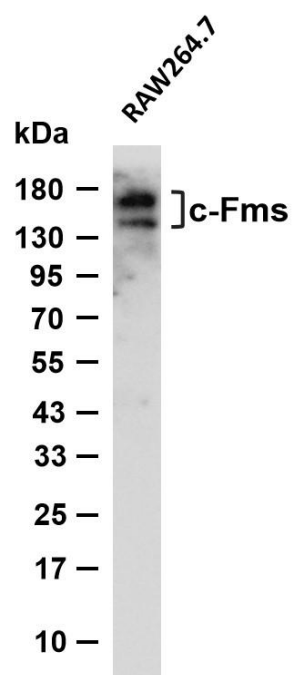
### Target Information

Gene name	CSF1R
Protein Name	Macrophage colony-stimulating factor 1 receptor

Organism	Gene ID	UniProt ID
Human	1436	P07333
Mouse		P09581

Cellular Localization	Cell membrane; Single-pass type I membrane protein.
Tissue specificity	Expressed in bone marrow and in differentiated blood mononuclear cells.

## Validation Data



Various whole cell lysates were separated by 4-20% SDS-PAGE, and the membrane was blotted with anti-c-Fms antibody. The HRP conjugated Goat anti-Rabbit IgG (H + L) antibody was used to detect the antibody.

Lane 1: RAW264.7

Predicted band size: 108kDa

Observed band size: 140-200kDa

For Research Use Only