

# PRAS40 (Phospho Thr246) Rabbit mAb (AR1961)

## Key Features

Host Species:	Rabbit
Reactivity:	Human,Mouse,Rat
Applications:	WB,IHC,IF,IP,ELISA
Isotype:	IgG,Kappa
MW:	27kDa (Calculated) 40kDa (Observed)

## Recommended Dilution Ratios

IHC:	1:200-1000
WB:	1:2000-10000
IF:	1:200-1000
ELISA:	1:5000-20000
IP:	1:50-200

## Storage

-15°C to -25°C/1 year (Do not lower than -25°C)

## Basic Information

Clonality	Monoclonal
-----------	------------

## Immunogen Information

Specificity	Endogenous
-------------	------------

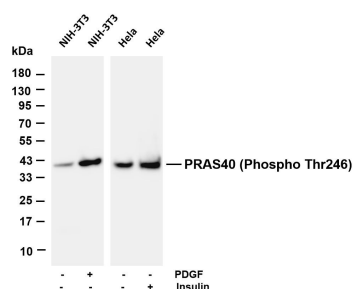
## Target Information

Gene name	AKT1S1
Protein Name	Proline-rich AKT1 substrate 1

Organism	Gene ID	UniProt ID
Human	84335	Q96B36
Mouse	67605	Q9D1F4

Cellular Localization	Cytoplasm, cytosol. Found in the cytosolic fraction of the brain.
Tissue specificity	Widely expressed with highest levels of expression in liver and heart. Expressed at higher levels in cancer cell lines (e.g. A-549 and HeLa) than in normal cell lines (e.g. HEK293).

## Validation Data



Various whole cell lysates were separated by 4-20% SDS-PAGE, and the membrane was blotted with anti-PRAS40 (Phospho Thr246) antibody. The HRP-conjugated Goat anti-Rabbit IgG(H + L) antibody was used to detect the antibody.

Lane 1: NIH-3T3

Lane 2: NIH-3T3 treated with PDGF(100 ng/mL) for 10 minutes

Lane 3: HeLa

Lane 4: HeLa treated with Insulin

Predicted band size: 27kDa

Observed band size: 40kDa

For Research Use Only