

Met (Phospho Tyr1234/1235) Rabbit mAb (AR1960)

Key Features

Host Species:	Rabbit
Reactivity:	Human,Mouse,Rat
Applications:	WB,IHC,IF,IP,ELISA
Isotype:	IgG,Kappa
MW:	156kDa (Calculated) 156kDa (Observed)

Recommended Dilution Ratios

IHC:	1:200-1000
WB:	1:2000-10000
IF:	1:200-1000
ELISA:	1:5000-20000
IP:	1:50-200

Storage

-15°C to -25°C/1 year (Do not lower than -25°C)

Basic Information

Clonality	Monoclonal
-----------	------------

Immunogen Information

Specificity	Endogenous
-------------	------------

Target Information

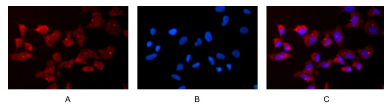
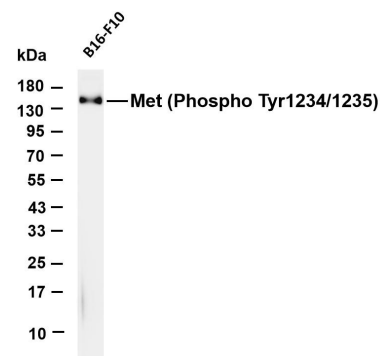
Gene name	MET
Protein Name	Met (Tyr1234/1235)

	Organism	Gene ID	UniProt ID
	Human	4233	P08581
	Mouse		P16056
	Rat	24553	P97523
Cellular Localization	Membrane; Single-pass type I membrane protein.; [Isoform 3]: Secreted.		

Tissue specificity

Expressed in normal hepatocytes as well as in epithelial cells lining the stomach, the small and the large intestine. Found also in basal keratinocytes of esophagus and skin. High levels are found in liver, gastrointestinal tract, thyroid and kidney. Also present in the brain. Expressed in metaphyseal bone (at protein level) (PubMed: 26637977).

Validation Data



Various whole cell lysates were separated by 4-20% SDS-PAGE, and the membrane was blotted with Met (Phospho Tyr1234/1235) antibody. The HRP-conjugated Goat anti-Rabbit IgG(H + L) antibody was used to detect the antibody.

Lane 1: B16-F10

Predicted band size: 156kDa

Observed band size: 156kDa

Immunofluorescence analysis of HEK293.

Picture A: Met (Phospho Tyr1234/1235) antibody (red).

Picture B: DAPI (blue).

Picture C: Merge of A+B

For Research Use Only