

MEK1/2 (Phospho Ser217/221)

Rabbit mAb (AR1956)

Key Features

Host Species:	Rabbit
Reactivity:	Human, Mouse, Rat
Applications:	WB, IHC, IF, IP, ELISA
Isotype:	IgG, Kappa
MW:	44kDa (Calculated) 44kDa (Observed)

Recommended Dilution Ratios

IHC:	1:1000-5000
WB:	1:2000-10000
IF:	1:200-1000
ELISA:	1:5000-20000
IP:	1:50-200

Storage

-15°C to -25°C/1 year (Do not lower than -25°C)

Basic Information

Clonality	Monoclonal
-----------	------------

Immunogen Information

Specificity	Endogenous
-------------	------------

Target Information

Gene name	MAP2K1/MAP2K2
-----------	---------------

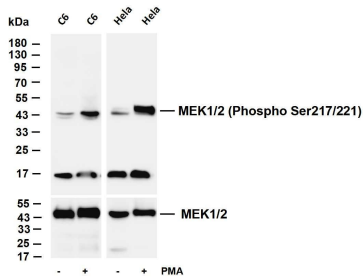
	Organism	Gene ID	UniProt ID
	Human	5604; 5605	P36507; Q02750
Cellular Localization	Cytoplasm, cytoskeleton, microtubule organizing center, centrosome. Cytoplasm, cytoskeleton, microtubule organizing center, spindle pole body. Cytoplasm. Nucleus. Membrane; Peripheral membrane protein. Localizes at centrosomes during prometaphase, midzone during anaphase and midbody during telophase/cytokinesis (PubMed:14737111). Membrane localization		

is probably regulated by its interaction with KSR1 (PubMed:10409742). .

Tissue specificity

Widely expressed, with extremely low levels in brain.

Validation Data



Various whole cell lysates were separated by 4-20% SDS-PAGE, and the membrane was blotted with anti-MEK1/2 (Phospho Ser217/221) antibody. The HRP-conjugated Goat anti-Rabbit IgG(H + L) antibody was used to detect the antibody.

Lane 1: C6

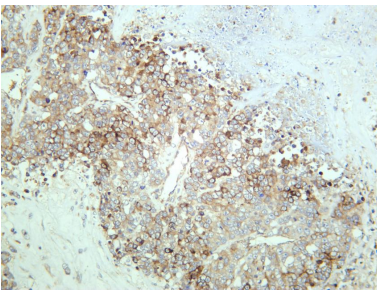
Lane 2: C6 was treated with Phorbol 12-myristate 13 acetate(200 nM) of 30 minutes

Lane 3: HeLa

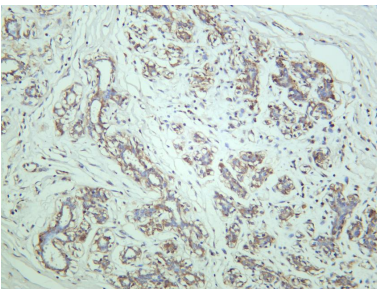
Lane 4: HeLa starved of serum overnight and then treated with Phorbol 12-myristate 13-acetate(200 nM)

Predicted band size: 44kDa

Observed band size: 44kDa



Human lung carcinoma was stained with anti-MEK1/2 (Phospho Ser217/221) rabbit antibody.



Human breast carcinoma was stained with anti-MEK1/2 (Phospho Ser217/221) rabbit antibody.