

Histone H2A (Ubiquityl Lys119) Rabbit mAb (AR1955)

Key Features

Host Species:	Rabbit
Reactivity:	Human,Mouse,Rat
Applications:	WB,IHC,IF,IP,ELISA,CHIP,Cut&Tag
Isotype:	IgG,Kappa
MW:	14kDa (Calculated) 23kDa (Observed)

Recommended Dilution Ratios

IHC:	1:1000-4000
WB:	1:2000-10000
IF:	1:200-1000
ELISA:	1:5000-20000
IP:	1:50-200
CHIP	1:50-1:100
Cut&Tag	1:50-1:100

Storage

-15°C to -25°C/1 year (Do not lower than -25°C)

Basic Information

Clonality	Monoclonal
-----------	------------

Immunogen Information

Specificity	Endogenous
-------------	------------

Target Information

Gene name	HIST1H2AG H2AFP; HIST1H2AI H2AFC; HIST1H2AK H2AFD; HIST1H2AL H2AFI; HIST1H2AM H2AFN
Protein Name	Histone H2A

Organism	Gene ID	UniProt ID
Human	8329	P0C0S8; P04908; P20671; Q96KK5; Q6FI13; Q7L7L0

Mouse

319164

P22752

Rat

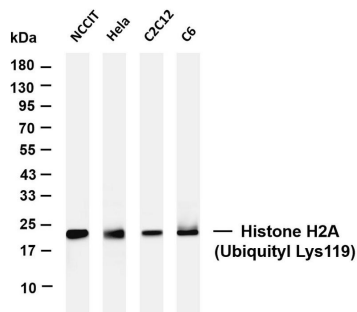
P02262

Cellular Localization

Nucleus. Chromosome.

Tissue specificity

Validation Data



Various whole cell lysates were separated by 4-20% SDS-PAGE, and the membrane was blotted with anti-Histone H2A (Ubiquityl Lys119) antibody. The HRP-conjugated Goat anti-Rabbit IgG(H + L) antibody was used to detect the antibody.

Lane 1: NCCIT

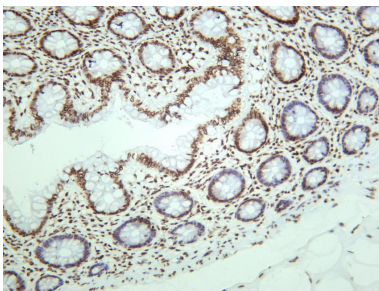
Lane 2: HeLa

Lane 3: C2C12

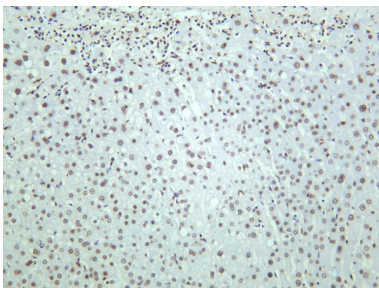
Lane 4: C6

Predicted band size: 14kDa

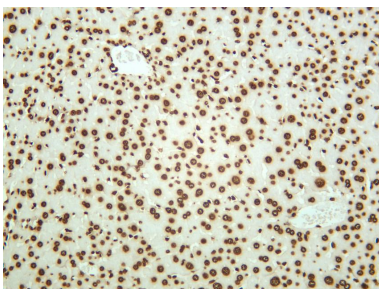
Observed band size: 23kDa



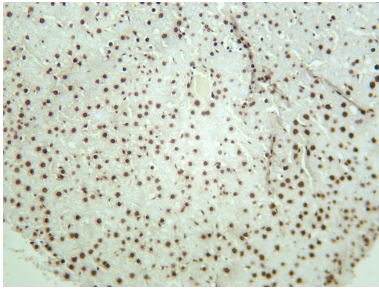
Human colon was stained with anti-Histone H2A (Ubiquityl Lys119) rabbit antibody.



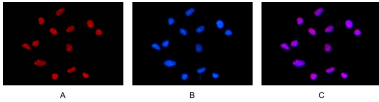
Human liver was stained with anti-Histone H2A (Ubiquityl Lys119) rabbit antibody.



Mouse liver was stained with anti-Histone H2A (Ubiquityl Lys119) rabbit antibody.



Rat liver was stained with anti-Histone H2A (Ubiquityl Lys119) rabbit antibody.



Immunofluorescence analysis of HEK293.

Picture A: Histone H2A (Ubiquityl Lys119) (red).

Picture B: DAPI (blue).

Picture C: Merge of A+B

For Research Use Only