

Histone H3 (Di Methyl Lys27) Rabbit mAb (AR1954)

Key Features

Host Species:	Rabbit
Reactivity:	Human,Mouse,Rat
Applications:	WB,IHC,IF,IP,ELISA,CHIP,Cut&Tag
Isotype:	IgG,Kappa
MW:	15kDa (Calculated) 17kDa (Observed)

Recommended Dilution Ratios

IHC:	1:500-2000
WB:	1:2000-10000
IF:	1:200-1000
ELISA:	1:5000-20000
IP:	1:50-200
CHIP	1:50-1:100
Cut&Tag	1:50-1:100

Storage -15°C to -25°C/1 year (Do not lower than -25°C)

Basic Information

Clonality Monoclonal

Immunogen Information

Specificity Endogenous

Target Information

Gene name HIST1H3A/HIST1H3/HIST1H3C/HIST1H3D/HIST1H3E/HIST1H3F/HIST1H3G/HIST1H3H/HIST1H3I/HIST1H3J/HIST2H3A/HIST2H3C/HIST2H3D/H3F3A/H3F3B/H3F3C

Protein Name Histone H3.1/Histone H3.2/Histone H3.3/Histone H3.3C

Organism	Gene ID	UniProt ID
Human	8350; 8351; 8352; 8353; 8354; 8355; 8356; 8357; 8358; 8968	P68431

Mouse

P68433

Rat

Q6LED0

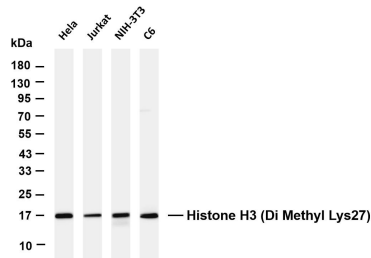
Cellular Localization

Nucleus. Chromosome.

Tissue specificity

Blood, Epithelium, Kidney, Lung, Ovary, Spleen, Uterus.

Validation Data



Various whole cell lysates were separated by 4-20% SDS-PAGE, and the membrane was blotted with anti-Histone H3 (Di Methyl Lys27) antibody. The HRP-conjugated Goat anti-Rabbit IgG(H + L) antibody was used to detect the antibody.

Lane 1: HeLa

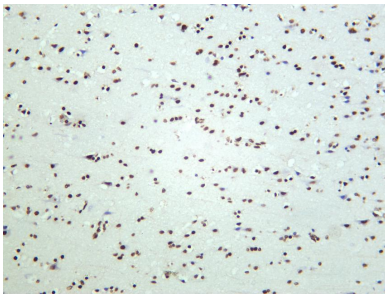
Lane 2: Jurkat

Lane 3: NIH-3T3

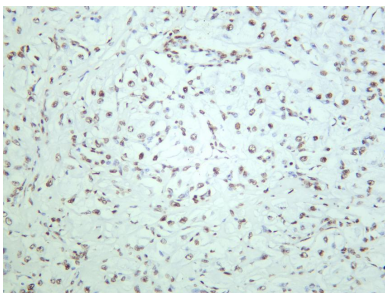
Lane 4: C6

Predicted band size: 15kDa

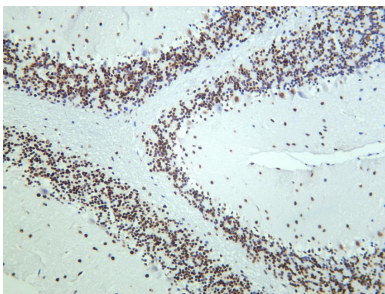
Observed band size: 17kDa



Human brain was stained with anti-Histone H3 (Di Methyl Lys27) rabbit antibody.



Human kidney carcinoma was stained with anti-Histone H3 (Di Methyl Lys27) rabbit antibody.



Mouse brain was stained with anti-Histone H3 (Di Methyl Lys27) rabbit antibody.

For Research Use Only